

ROCKWALL, TEXAS

AL-6323 (FAA)

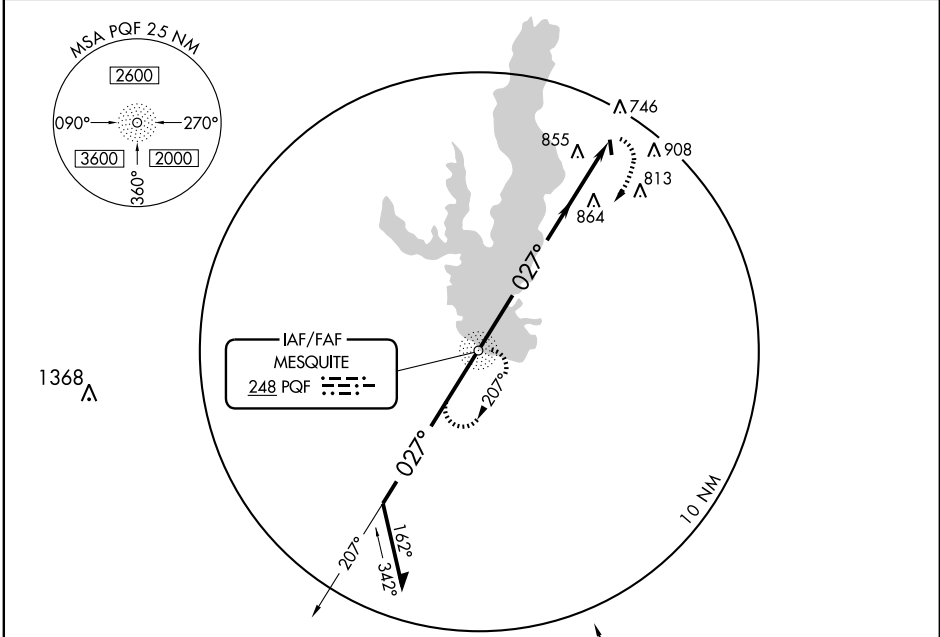
**NDB-A**

ROCKWALL MUNI (F46)

NDB PQF <b>248</b>	APP CRS <b>027°</b>	Rwy Idg TDZE Apt Elev	<b>N/A</b> <b>N/A</b> <b>574</b>
-----------------------	------------------------	-----------------------------	--

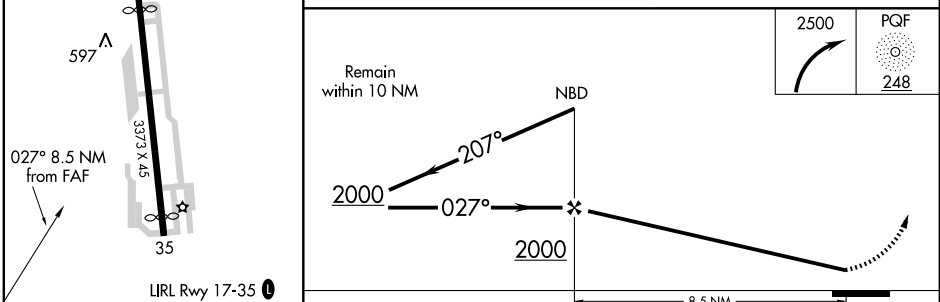
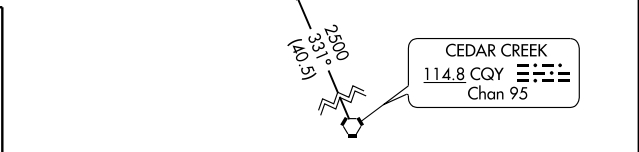
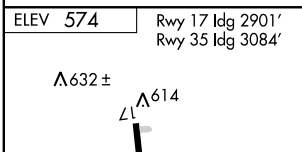
**▼** Use Dallas-Love Field altimeter setting.  
**▲ NA** MISSED APPROACH: Climbing right turn to 2500 direct PQF NDB and hold.

REGIONAL APP CON **124.3 282.275** UNICOM **122.8 (CTAF) 0**



SC-2, 22 OCT 2009 to 19 NOV 2009

SC-2, 22 OCT 2009 to 19 NOV 2009



FAF to MAP 8.5 NM						CATEGORY	A	B	C	D
Knots	60	90	120	150	180	CIRCLING	1400-1 826 (900-1)	1400-1½ 826 (900-1½)	1400-2½ 826 (900-2½)	NA
Min:Sec	8:30	5:40	4:15	3:24	2:50					

ROCKWALL, TEXAS  
Orig-B 06187

32°56'N-96°26'W

ROCKWALL MUNI (F46)  
**NDB-A**