

RNAV (GPS) RWY 18

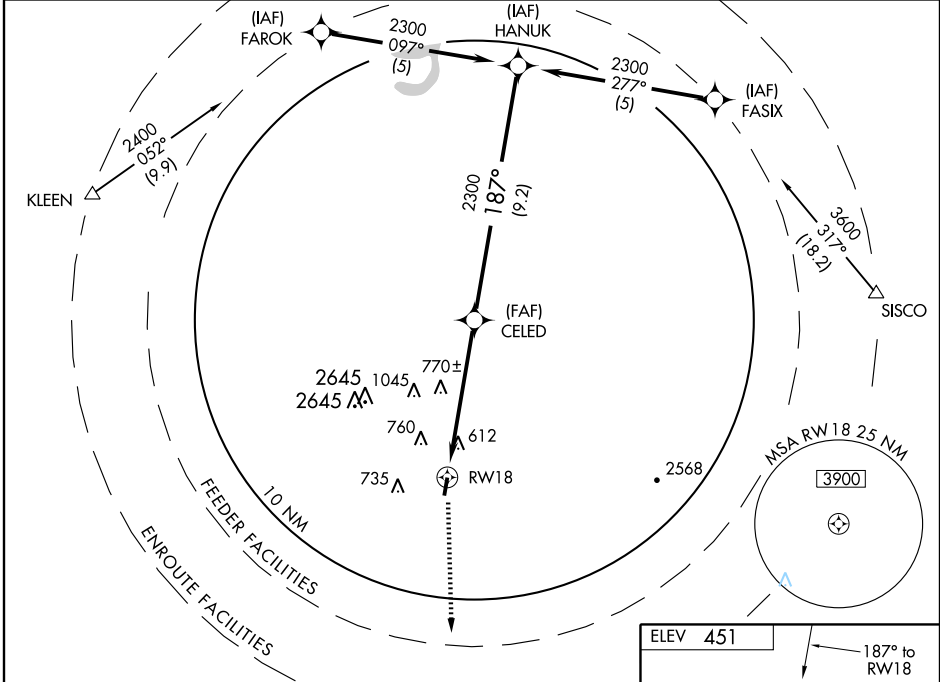
POTEAU/ROBERT S. KERR (R.K.R.)

| | |
|------------------------|------------------------|
| APP CRS 187° | Rwy Idg 4006 |
| | TDZE 451 |
| | Apt Elev 451 |

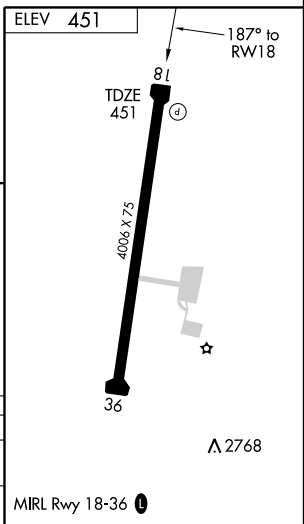
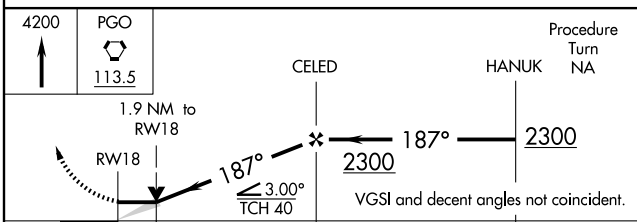
▽ If local altimeter setting not received, use Fort Smith Rgnl altimeter setting and increase all MDAs 60 feet.
▲ NA VDP NA with Fort Smith Rgnl altimeter setting. GPS or RNP-0.3 required. DME/DME RNP-0.3 NA.

MISSED APPROACH: Climb to 4200 direct PGO VORTAC and hold.

| | | |
|--------------------------|---|---------------------------------|
| AWOS-3 120.625 | RAZORBACK APP CON * 120.9 353.575 | UNICOM 122.8 (CTAF) ① |
|--------------------------|---|---------------------------------|



Procedure NA for arrival at KLEEN via V272 southwest.
 Procedure NA for arrival at SISCO via V289 southbound.



| CATEGORY | A | B | C | D |
|----------|--------|-------------|-------------------------|----|
| LNVA MDA | 1020-1 | 569 (600-1) | 1020-1½ 569 (600-1½) | NA |
| CIRCLING | 1020-1 | 569 (600-1) | 1040-1½ 589 (600-1½) | NA |

SC-1, 22 OCT 2009 to 19 NOV 2009

SC-1, 22 OCT 2009 to 19 NOV 2009