

# RNAV (GPS) RWY 9

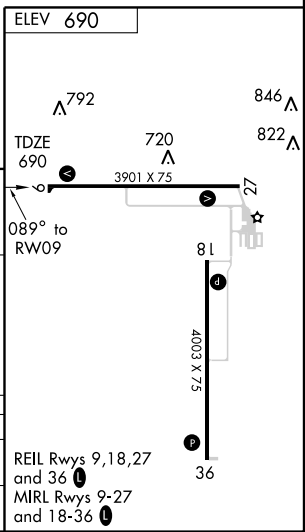
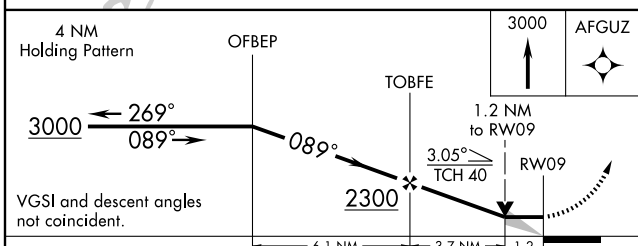
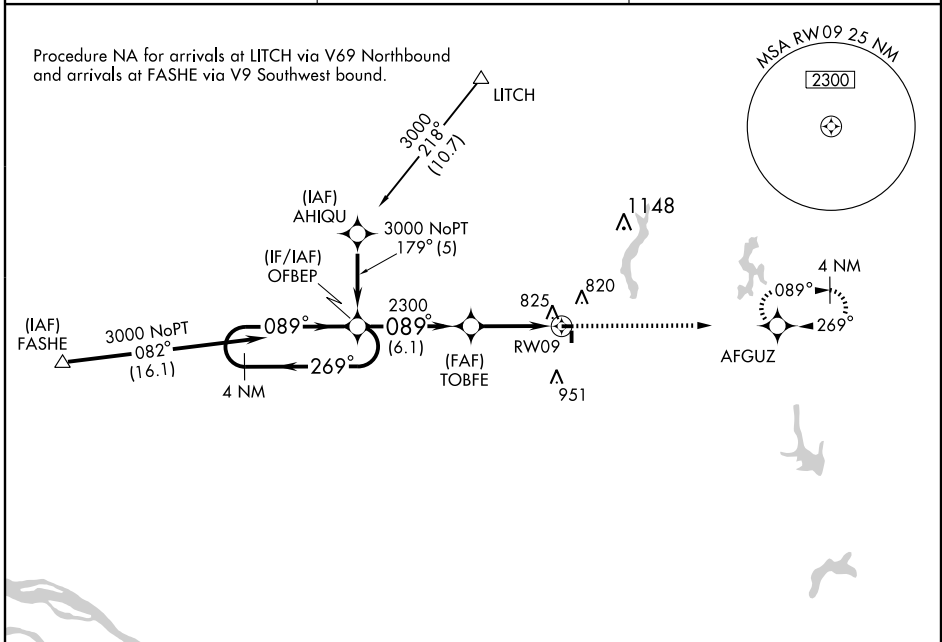
LITCHFIELD MUNI (3LF)

APP CRS	Rwy Idg	<b>3901</b>
<b>089°</b>	TDZE	<b>690</b>
	Apt Elev	<b>690</b>

**NA** If local altimeter setting not received, use Taylorville altimeter setting and increase all MDA's 80 feet. VDP NA with Taylorville altimeter setting. DME/DME RNP -0.3 NA.

MISSED APPROACH: Climb to 3000 direct AFGUZ and hold.

AWOS-3 <b>118,175</b>	ST. LOUIS APP CON <b>124.2 353.9</b>	UNICOM <b>122.8 (CTAF)</b>
--------------------------	---	-------------------------------



CATEGORY	A	B	C	D
LNAV MDA	1140-1	450 (500-1)	1140-1¼ 450 (500-1¼)	NA
CIRCLING	1160-1	470 (500-1)	1160-1½ 470 (500-1½)	NA

REIL Rwy 9, 18, 27 and 36  
MIRL Rwy 9-27 and 18-36

EC-3, 22 OCT 2009 to 19 NOV 2009

EC-3, 22 OCT 2009 to 19 NOV 2009