

LITCHFIELD, ILLINOIS

AL-6318 (FAA)

RNAV (GPS) RWY 18

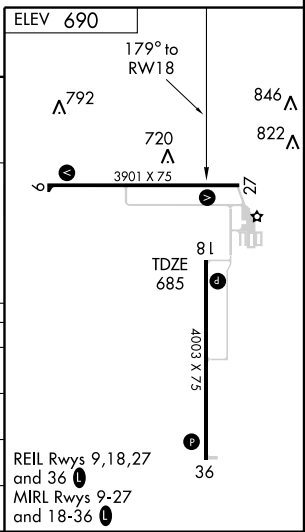
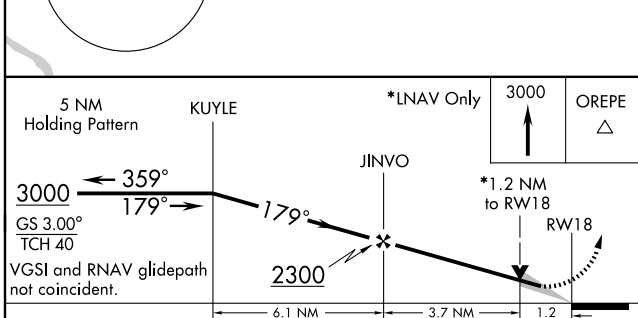
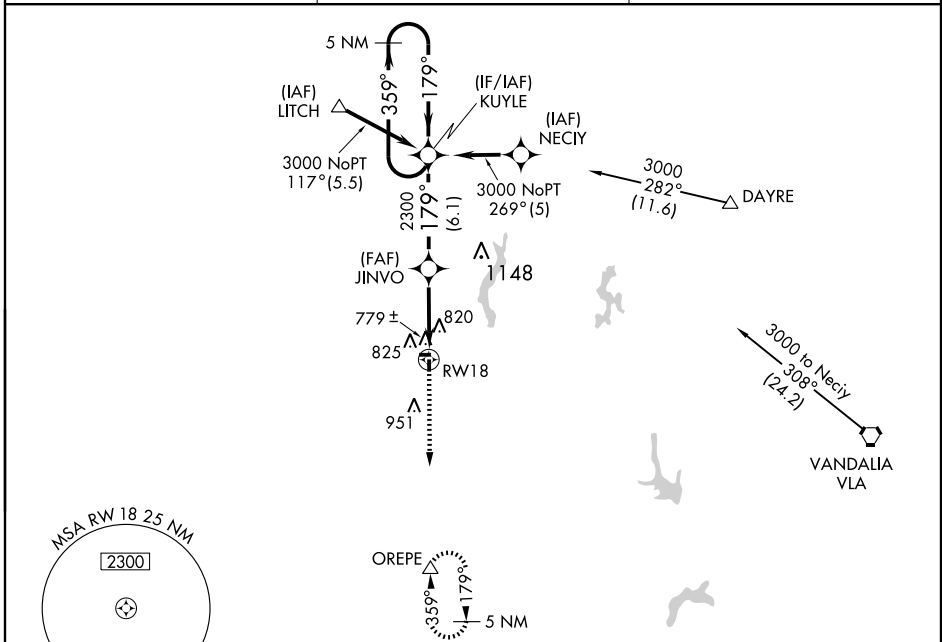
LITCHFIELD MUNI (3LF)

WAAS CH 58203 W18A	APP CRS 179°	Rwy Idg TDZE Apt Elev	4003 685 690
--	------------------------	-----------------------------	---

⚠ If local altimeter setting not received, use Taylorville altimeter setting and increase all DAs 73 feet and all MDAs 80 feet. Baro-VNAV and VDP NA when using Taylorville altimeter setting. For uncompensated Baro-VNAV systems, LNAV/VNAV NA below -16°C (4°F) or above 54°C (130°F). DME/DME RNP-0.3 NA.

MISSED APPROACH: Climb to 3000 direct OREPE and hold.

AWOS-3 118,175	ST. LOUIS APP CON 124.2 353.9	UNICOM 122.8 (CTAF) 📻
--------------------------	---	--



CATEGORY	A	B	C	D
LPV DA	997-1 312 (400-1)			NA
LNAV/VNAV DA	1112-1½ 427 (500-1½)			NA
LNAV MDA	1100-1 415 (500-1)		1100-1¼ 415 (500-1¼)	NA
CIRCLING	1160-1 470 (500-1)		1160-1½ 470 (500-1½)	NA

LITCHFIELD, ILLINOIS
Orig-A 07354

39° 10' N-89° 40' W

RNAV (GPS) RWY 18

EC-3, 22 OCT 2009 to 19 NOV 2009

EC-3, 22 OCT 2009 to 19 NOV 2009