

LITCHFIELD, ILLINOIS

AL-6318 (FAA)

# NDB RWY 27

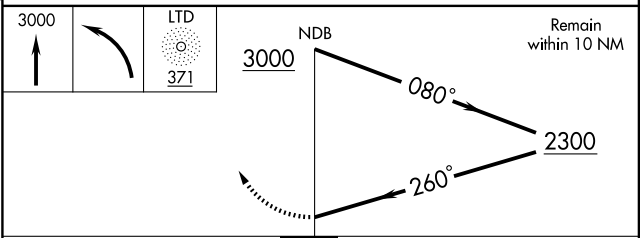
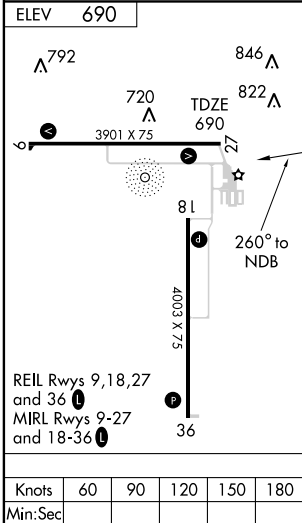
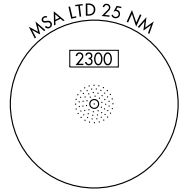
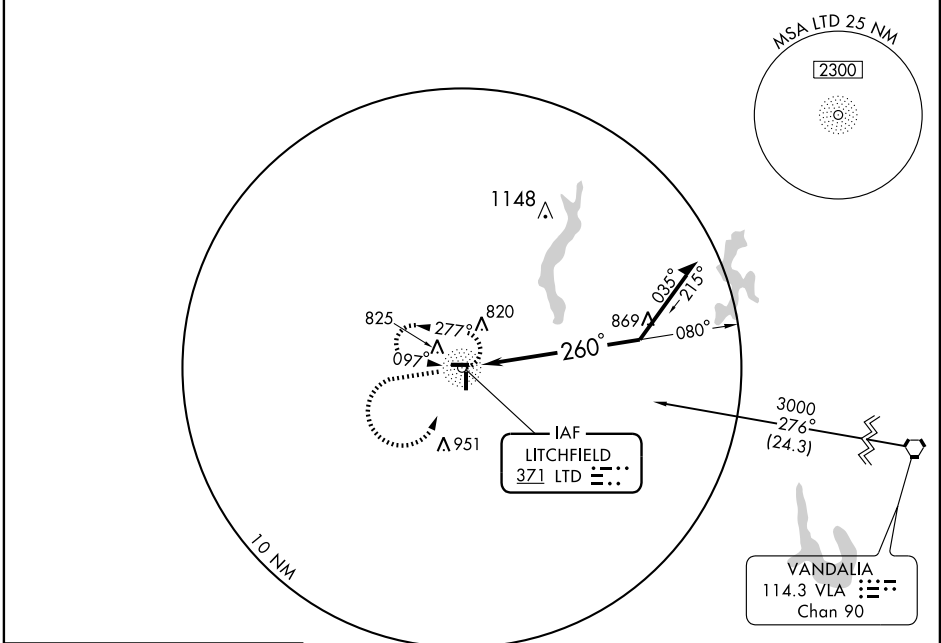
LITCHFIELD MUNI (3LF)

NDB LTD <b>371</b>	APP CRS <b>260°</b>	Rwy Idg <b>3901</b>
		TDZE <b>690</b>
		Apt Elev <b>690</b>

**NA** If local altimeter setting not received, use Taylorville altimeter setting and increase all MDA's 80 feet.

MISSED APPROACH: Climb to 3000 then left turn direct LTD NDB and hold.

AWOS-3 <b>118.175</b>	ST. LOUIS APP CON <b>124.2 353.9</b>	UNICOM <b>122.8 (CTAF) 0</b>
--------------------------	---	---------------------------------



CATEGORY	A	B	C	D
S-27	1200-1	510 (600-1)	1200-1½ 510 (600-1½)	NA
CIRCLING	1200-1	510 (600-1)	1200-1½ 510 (600-1½)	NA

LITCHFIELD, ILLINOIS  
Amdt 8 07326

39° 10'N-89° 40'W

# LITCHFIELD MUNI (3LF) NDB RWY 27

EC-3, 22 OCT 2009 to 19 NOV 2009

EC-3, 22 OCT 2009 to 19 NOV 2009