

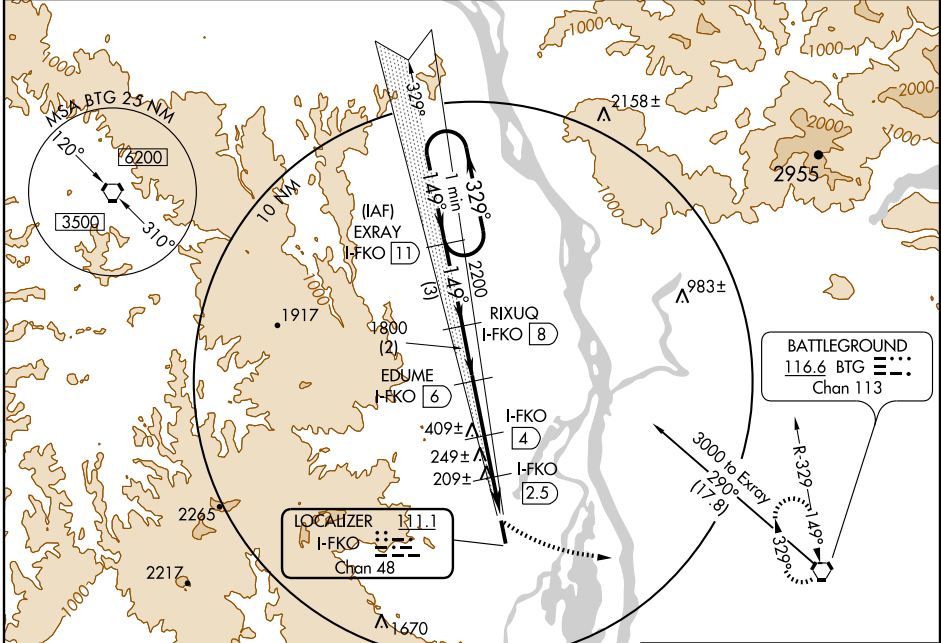
LOC/DME RWY 15

SCAPPOOSE INDUSTRIAL AIRPARK (SPB)

LOC/DME I-FKO 111.1 Chan 48	APP CRS 149°	Rwy Idg 5100 TDZE 55 Apt Elev 55
---	------------------------	---

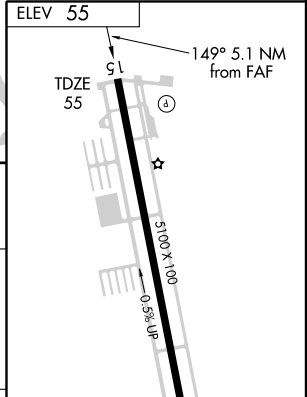
▼ Circling not authorized west of Rwy 15-33. MISSED APPROACH: Climbing left turn to 5000 direct BTG VORTAC and hold.

ASOS 135.875	PORTLAND APP CON 124.35 299.2	CINC DEL 121.65	UNICOM 122.8 (CTAF)
------------------------	---	---------------------------	-------------------------------



NW-1, 22 OCT 2009 to 19 NOV 2009

NW-1, 22 OCT 2009 to 19 NOV 2009



One Minute Holding Pattern	EXRAY I-FKO (11)	RIXUQ I-FKO (8)	EDUME I-FKO (6)	I-FKO (4)	I-FKO (2.5)	I-FKO (0.9)	5000 BTG
2800	← 329°	→ 149°	→ 149°	→ 3.17°	TCH 40		116.6
	3 NM	2 NM	2 NM	1.5 NM	1.6 NM		

CATEGORY	A	B	C	D
S-15	460-1	405 (500-1)	460-1¼	405 (500-1¼)
CIRCLING	480-1 425 (500-1)	520-1 465 (500-1)	520-1½ 465 (500-1½)	620-2 565 (600-2)

REIL Rwy 15	51	149° 5.1 NM from FAF			
MIRL Rwy 15-33	33				
Knots	60	90	120	150	180
Min:Sec					