

ORANGE, TEXAS

AL-6312 (FAA)

VOR/DME or GPS RWY 22

ORANGE COUNTY (OR.G)

VOR/DME BPT 114.5 Chan 92	APP CRS 229°	Rwy Idg TDZE Apt Elev	5500 12 12
---	------------------------	-----------------------------	---------------------------------------

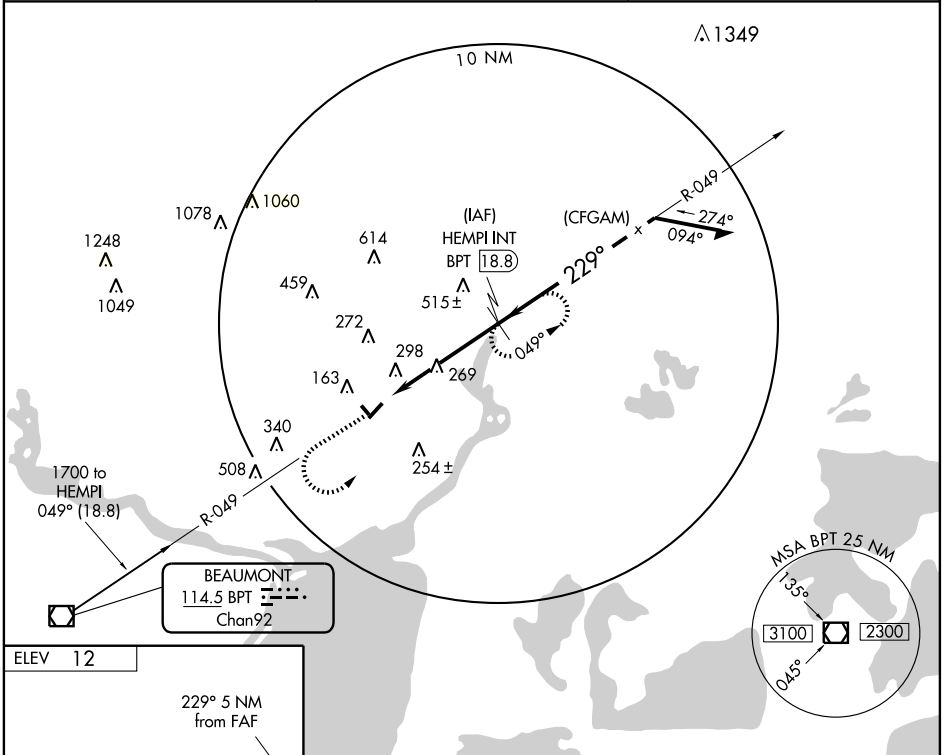
▲ NA Use Beaumont-Port Arthur altimeter setting.

MISSED APPROACH: Climb to 1000, then climbing left turn to 2000 via BPT R-049 to HEMPI 18.8 DME and hold.

AWOS-3
118.975

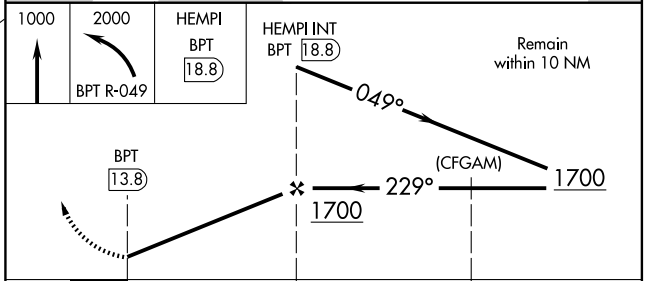
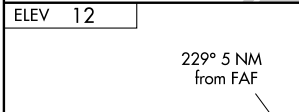
HOUSTON APP CON
121.3 377.1

UNICOM
122.8 (CTAF) **0**



SC-5, 22 OCT 2009 to 19 NOV 2009

SC-5, 22 OCT 2009 to 19 NOV 2009



CATEGORY	A	B	C	D
S-22	600-1	588 (600-1)	600-1½ 588 (600-1½)	600-1¾ 588 (600-1¾)
CIRCLING	660-1	648 (700-1)	660-1¾ 648 (700-1¾)	660-2 648 (700-2)

MIRL Rwy 4-22 **0**

ORANGE, TEXAS
Amdt 1A 09183

30° 04' N-93° 48' W

VOR/DME or GPS RWY 22

ORANGE COUNTY (OR.G)