

PITTSFIELD, ILLINOIS

AL-6310 (FAA)

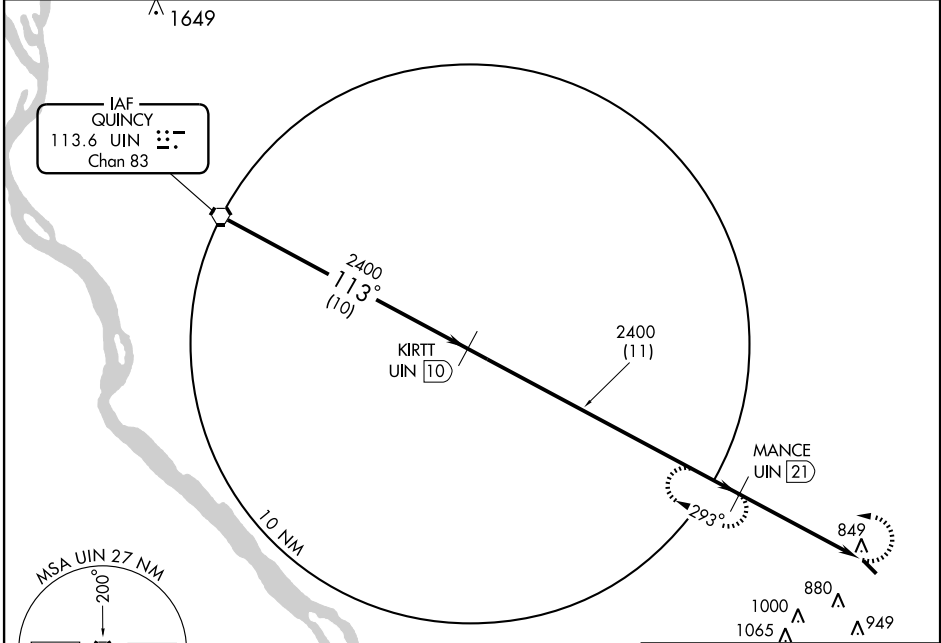
VOR/DME RWY 13

PITTSFIELD PENSTONE MUNI (PPQ)

VORTAC UIN 113.6	APP CRS 113°	Rwy Idg TDZE Apt Elev	4000 710 710
----------------------------	------------------------	-----------------------------	---

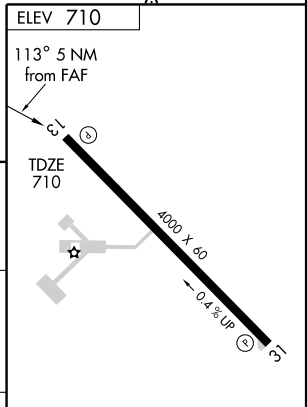
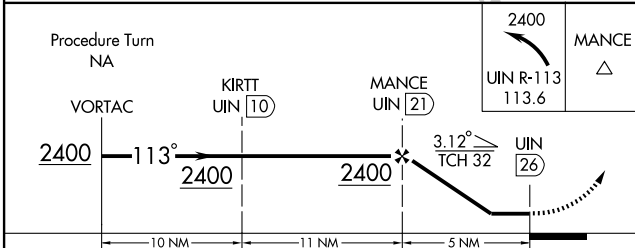
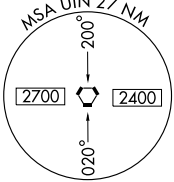
MISSED APPROACH: Climbing left turn to 2400 via UIN R-113 to MANCE 21 DME and hold.

AWOS-3 118.525	KANSAS CITY CENTER 135.525 319.9	UNICOM 122.8 (CTAF) 0
--------------------------	--	---------------------------------



EC-3, 22 OCT 2009 to 19 NOV 2009

EC-3, 22 OCT 2009 to 19 NOV 2009



Procedure Turn NA	2400			
VORTAC	2400			
	10 NM	11 NM	5 NM	
CATEGORY	A	B	C	D
S-13	1300-1 590 (600-1)	1300-1½ 590 (600-1¼)	1300-1½ 590 (600-1½)	NA
CIRCLING	1300-1 590 (600-1)	1300-1½ 590 (600-1¼)	1300-1½ 590 (600-1½)	NA

MIRL Rwy 13-31 0					
Knots	60	90	120	150	180
Min:Sec					

PITTSFIELD, ILLINOIS
Amdt 4 02108

39°38' N - 90°47' W

PITTSFIELD PENSTONE MUNI (PPQ)

VOR/DME RWY 13