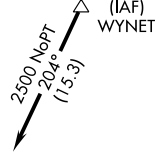
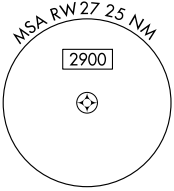


RNAV (GPS) RWY 27

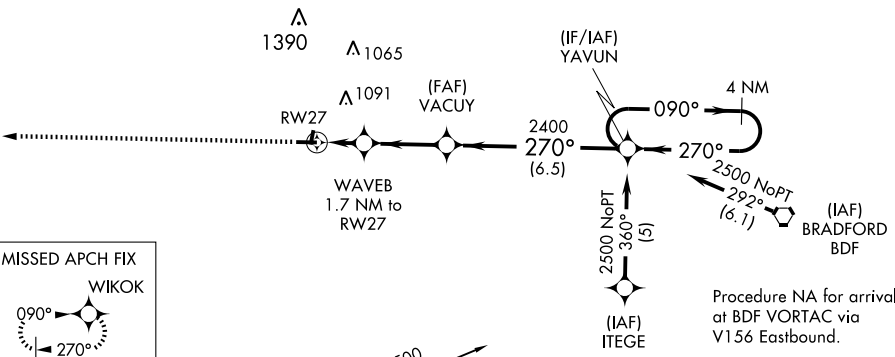
KEWANEE MUNI (EZI)

APP CRS	Rwy Idg	4500
	TDZE	858
270°	Apt Elev	858

<p>▽ DME/DME RNP-0.3 NA. Use Galesburg altimeter setting; when not received, use Moline altimeter setting and increase all MDA 40 feet.</p> <p>△ NA</p>	<p>MISSED APPROACH: Climb to 2400 direct WIKOK and hold.</p>	
<p>GALESBURG AWOS-3 109.8</p>	<p>QUAD CITY APP CON ★ 118.2 257.8</p>	<p>UNICOM 122.8 (CTAF) 0</p>



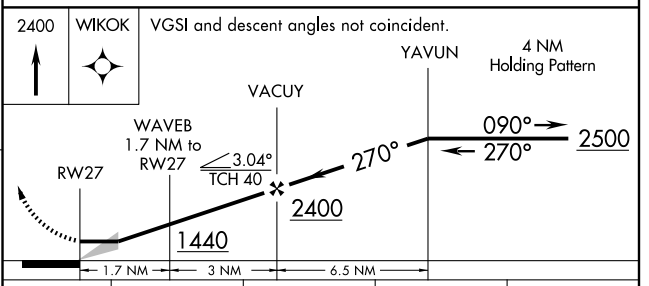
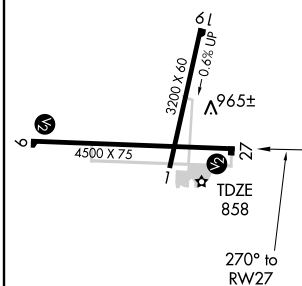
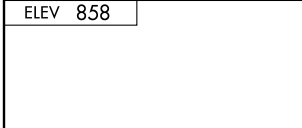
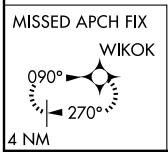
Procedure NA for arrivals at WYNET via V8-38 Eastbound.



Procedure NA for arrivals at BDF VORTAC via V156 Eastbound.

EC-3, 22 OCT 2009 to 19 NOV 2009

EC-3, 22 OCT 2009 to 19 NOV 2009



CATEGORY	A	B	C	D
LNAV MDA	1300-1	442 (500-1)	1300-1¼ 442 (500-1¼)	NA
CIRCLING	1340-1	482 (500-1)	1600-2¼ 742 (800-2¼)	NA