

# NDB RWY 36

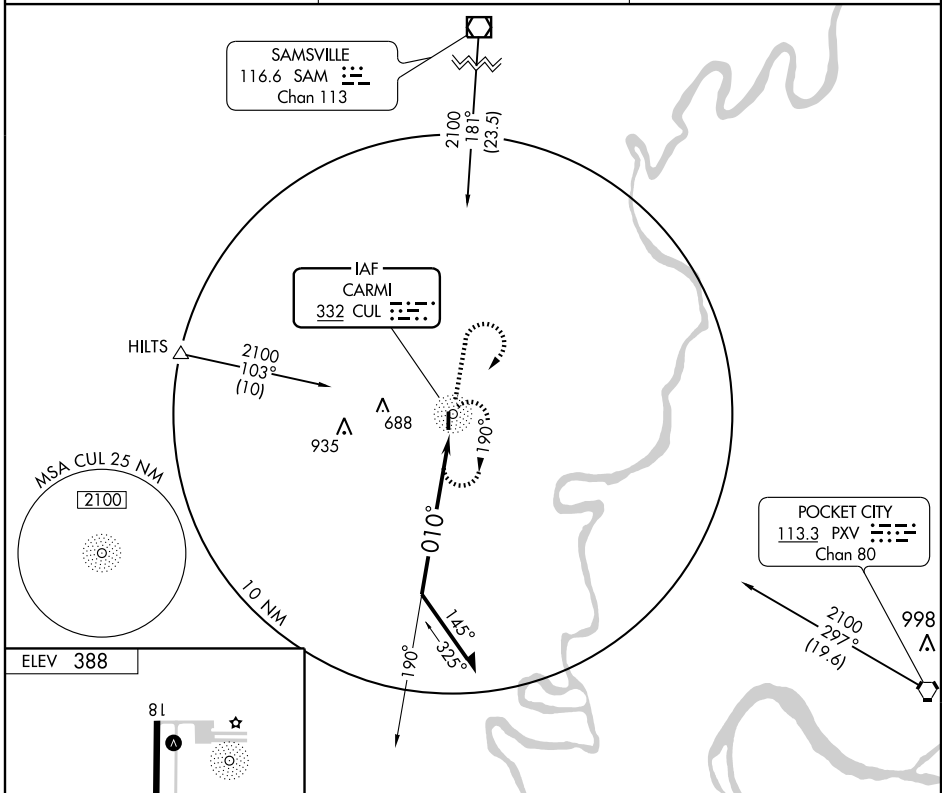
CARMI MUNI (CUL)

NDB CUL	APP CRS	Rwy Idg	<b>4001</b>
<b>332</b>	<b>010°</b>	TDZE	<b>384</b>
		Apt Elev	<b>388</b>

**NA** If local altimeter setting not received, use Evansville altimeter setting.

MISSED APPROACH: Climb to 1500 then climbing right turn to 2100 direct CUL NDB and hold.

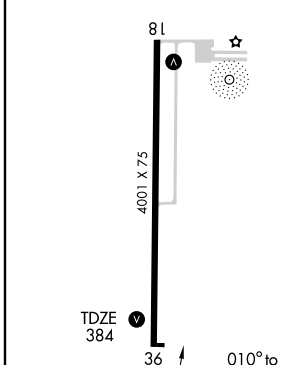
AWOS-3 <b>118.425</b>	EVANSVILLE APP CON ★ <b>127.35 267.9</b>	UNICOM <b>122.8 (CTAF) 0</b>
--------------------------	---	---------------------------------



EC-3, 22 OCT 2009 to 19 NOV 2009

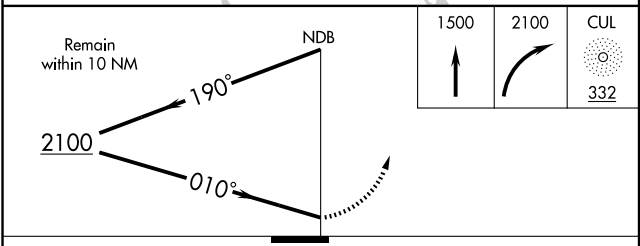
EC-3, 22 OCT 2009 to 19 NOV 2009

ELEV 388



REIL Rwy 36 (L) MIRL Rwy 18-36 (L)

Knots	60	90	120	150	180
Min:Sec					



CATEGORY	A	B	C	D
S-36	1080-1 696 (700-1)		1080-2 696 (700-2)	NA
CIRCLING	1080-1 692 (700-1)		1080-2 692 (700-2)	NA