

PARIS, ILLINOIS

AL-6298 (FAA)

RNAV (GPS) RWY 27

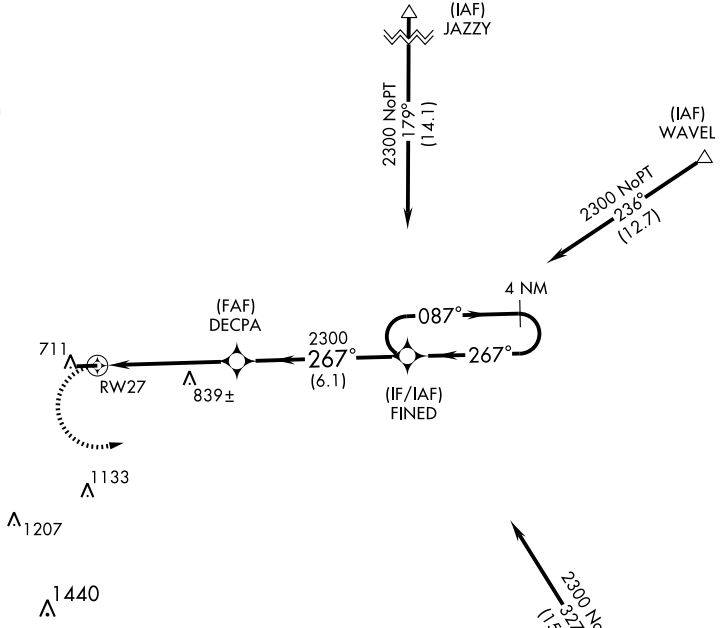
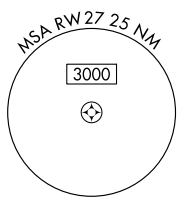
PARIS/EDGAR COUNTY (PRG)

APP CRS	Rwy Idg	4502
267°	TDZE	651
	Apt Elev	654

⚠ When local altimeter setting not received, use Terre Haute Intl-Hulman Field altimeter setting and increase all MDAs 80 feet, and LNAV Cat C visibility ¼ mile. Visibility reduction by helicopters NA. DME/DME RNP-0.3 NA.

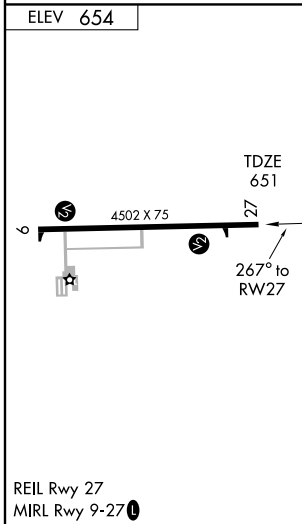
MISSED APPROACH: Climbing left turn to 2300 direct FINED and hold.

AWOS-3 124.175	HULMAN APP CON ★ 125.45 339.8	UNICOM 123.0 (CTAF) ①
--------------------------	---	---------------------------------



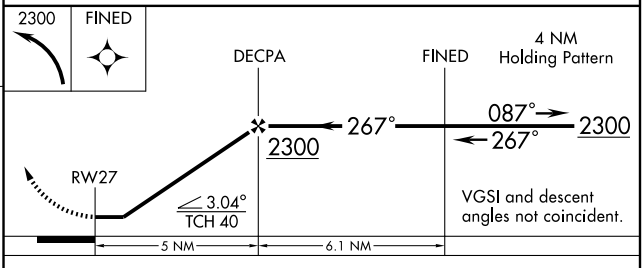
EC-3, 22 OCT 2009 to 19 NOV 2009

EC-3, 22 OCT 2009 to 19 NOV 2009



Procedure NA for arrivals at TTH VORTAC via airway radials 280 CW 303.

(IAF) TERRE HAUTE TTH



CATEGORY	A	B	C	D
LNAV MDA	1100-1	449 (500-1)	1100-1¼ 449 (500-1¼)	NA
CIRCLING	1100-1 446 (500-1)	1120-1 466 (500-1)	1120-1½ 466 (500-1½)	NA

PARIS, ILLINOIS
Orig 07354

39°42'N-87°40'W

PARIS/EDGAR COUNTY (PRG)

RNAV (GPS) RWY 27