

PARIS, ILLINOIS

AL-6298 (FAA)

NDB PRG	APP CRS	Rwy Idg	4502
341	262°	TDZE	651
		Apt Elev	654

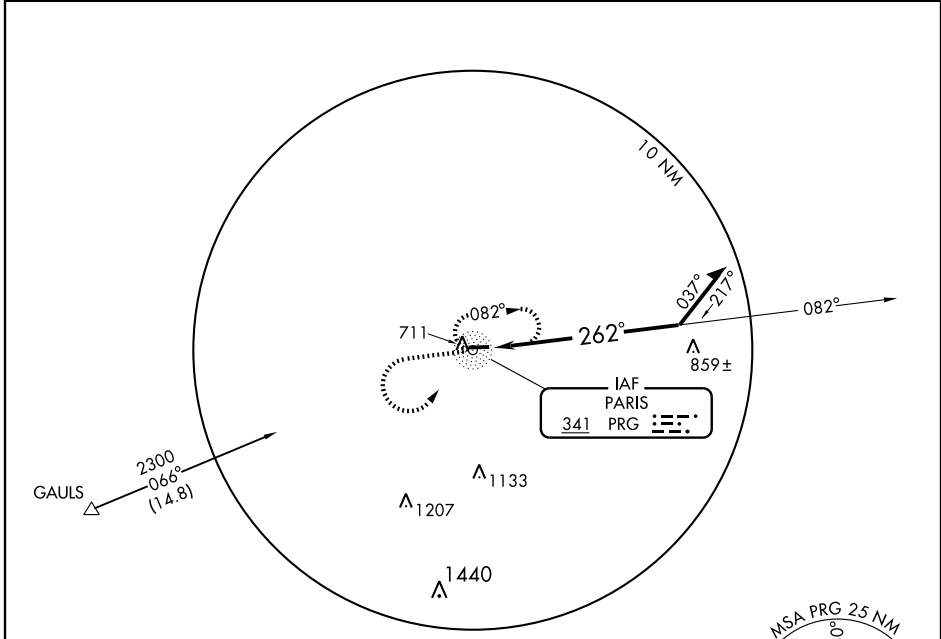
NDB RWY 27

PARIS/ EDGAR COUNTY (PRG)

▼ When local altimeter setting not received, use Terre Haute Intl-Hulman Field altimeter setting and increase all MDAs 80 feet, and all Cat C visibilities ¼ mile. Visibility reduction by helicopters NA.

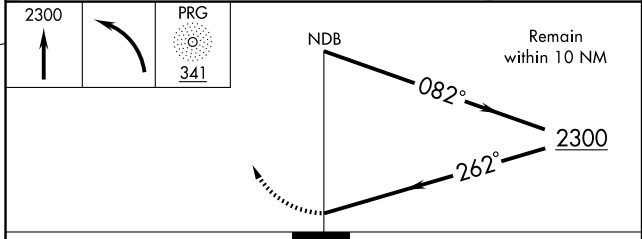
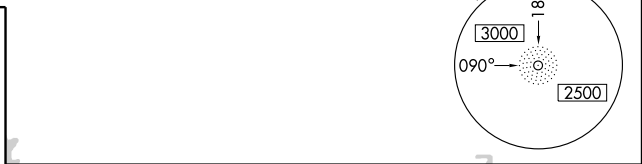
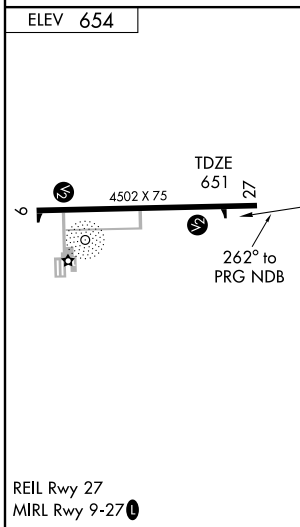
MISSED APPROACH: Climb to 2300 then left turn direct PRG NDB and hold.

AWOS-3 124.175	HULMAN APP CON ★ 125.45 339.8	UNICOM 123.0 (CTAF) ①
--------------------------	---	---------------------------------



EC-3, 22 OCT 2009 to 19 NOV 2009

EC-3, 22 OCT 2009 to 19 NOV 2009



CATEGORY	A	B	C	D
S-27	1220-1	569 (600-1)	1220-1½ 569 (600-1½)	NA
CIRCLING	1220-1	566 (600-1)	1220-1½ 566 (600-1½)	NA

PARIS, ILLINOIS
Amdt 10 07354

39°42'N-87°40'W

NDB RWY 27