

# LOC RWY 1

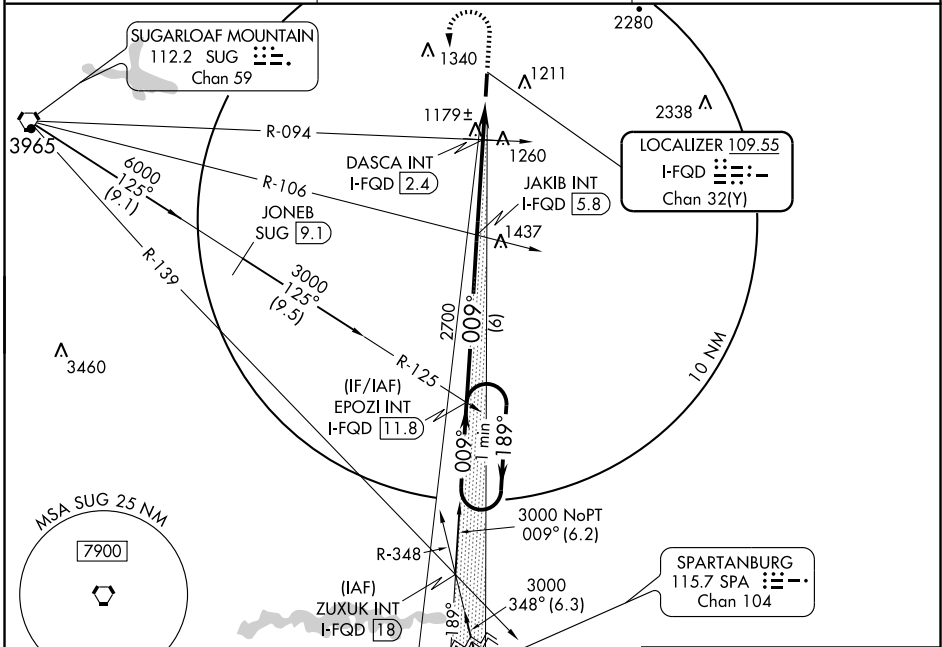
LOC/DME I-FQD <b>109.55</b> Chan <b>32(Y)</b>	APP CRS <b>009°</b>	Rwy Idg TDZE Apt Elev	<b>5000</b> <b>1072</b> <b>1078</b>
---	------------------------	-----------------------------	---

RUTHERFORDTON/ RUTHERFORD CO-MARCHMAN FIELD (FQD)

▼ When local altimeter setting not received, use Shelby-Cleveland County Rgnl altimeter setting and increase all MDAs 80 feet  
▲ NA and all visibilities ¼ mile.

MISSED APPROACH: Climb to 1800 then climbing left turn to 3000 via heading 165° and I-FQD south course to EPOZI INT/I-FQD 11.8 DME and hold.

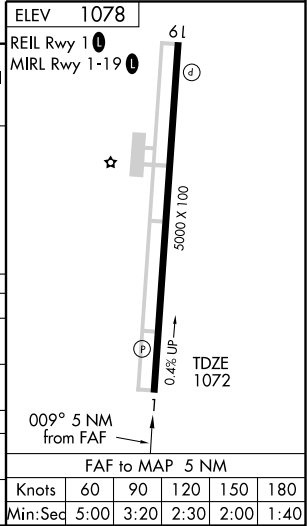
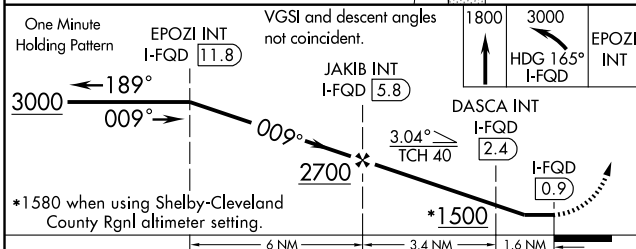
AWOS-3 <b>118.275</b>	GREER APP CON★ <b>119.4 350.2</b>	UNICOM <b>122.8</b> (CTAF) <b>①</b>
--------------------------	--------------------------------------	--



SE-2, 22 OCT 2009 to 19 NOV 2009

SE-2, 22 OCT 2009 to 19 NOV 2009

ELEV 1078	REIL Rwy 1 <b>①</b>	MIRL Rwy 1-19 <b>①</b>
-----------	---------------------	------------------------



CATEGORY	A	B	C	D
S-1	1500-1	428 (500-1)	1500-1¼ 428 (500-1¼)	1500-1½ 428 (500-1½)
CIRCLING	1560-1	482 (500-1)	1560-1½ 482 (500-1½)	1640-2 562 (600-2)
DASCA FIX MINIMUMS				
S-1	1440-1	368 (400-1)	1440-1¼ 368 (400-1¼)	
CIRCLING	1560-1	482 (500-1)	1560-1½ 482 (500-1½)	1640-2 562 (600-2)

# LOC RWY 1