

WAAS CH <b>69212</b> <b>W25A</b>	APP CRS <b>252°</b>	Rwy Idg TDZE Apt Elev	<b>5001</b> <b>913</b> <b>913</b>
--	------------------------	-----------------------------	---

# RNAV (GPS) RWY 25

FLEMINGSBURG / FLEMING-MASON (F/GX)

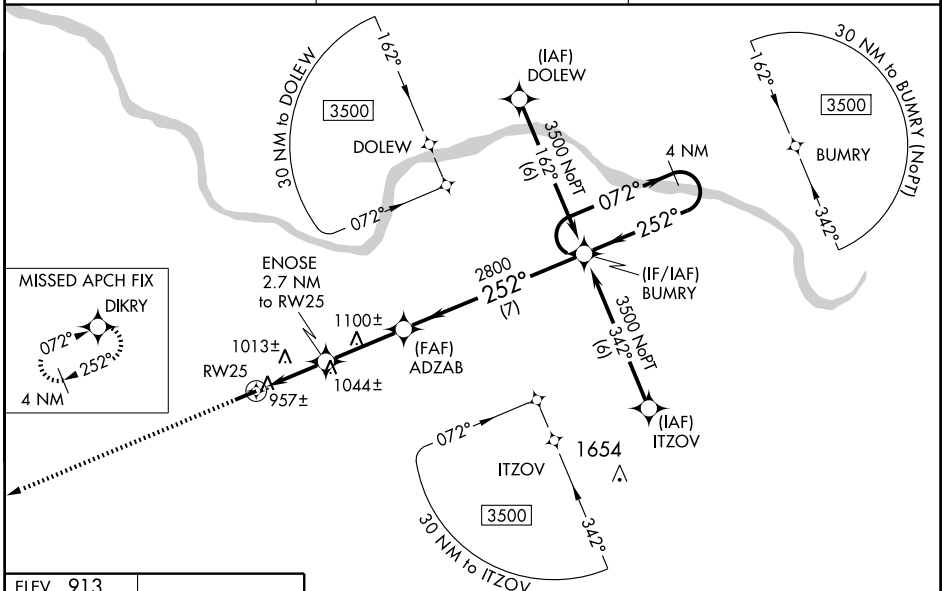
Baro-VNAV NA when using Lexington altimeter setting. For uncompensated Baro-VNAV systems, LNAV/VNAV NA below -16°C (4°F) or above 47°C (116°F). DME/DME RNP-0.3 NA. Visibility reduction by helicopters NA. When local altimeter setting not received, use Lexington altimeter setting and increase LPV DA to 1290, LNAV/VNAV DA to 1344 feet. Increase LPV visibility ½ mile, LNAV/VNAV visibility ½ mile. Increase all MDA 140 feet. Increase LNAV Cat. C visibility ½ mile, Cat. D ¼ mile. Increase Circling Cats. C/D visibility ¼ mile.

MISSED APPROACH:  
Climb to 3000 direct  
DIKRY and hold.

AWOS-3  
**118.125**

INDIANAPOLIS CENTER  
**124.225 360.725**

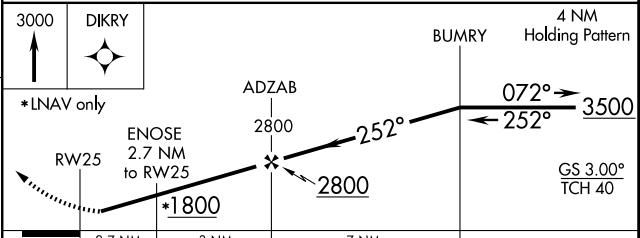
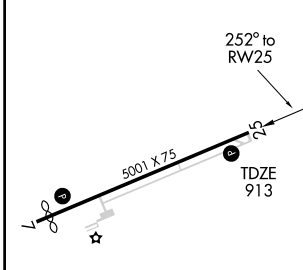
UNICOM  
**123.0(CTAF)**



SE-1, 22 OCT 2009 to 19 NOV 2009

SE-1, 22 OCT 2009 to 19 NOV 2009

ELEV 913



CATEGORY	A	B	C	D
LPV DA		1163-1	250 (300-1)	
LNAV/VNAV DA		1217-1	304 (400-1)	
LNAV MDA	1280-1	367 (400-1)		1280-1 ¼ 367 (400-1 ¼)
CIRCLING	1360-1 447 (500-1)	1380-1 467 (500-1)	1380-1 ½ 467 (500-1 ½)	1480-2 567 (600-2)

MIRL Rwy 7-25  
REIL Rwy 7 and 25