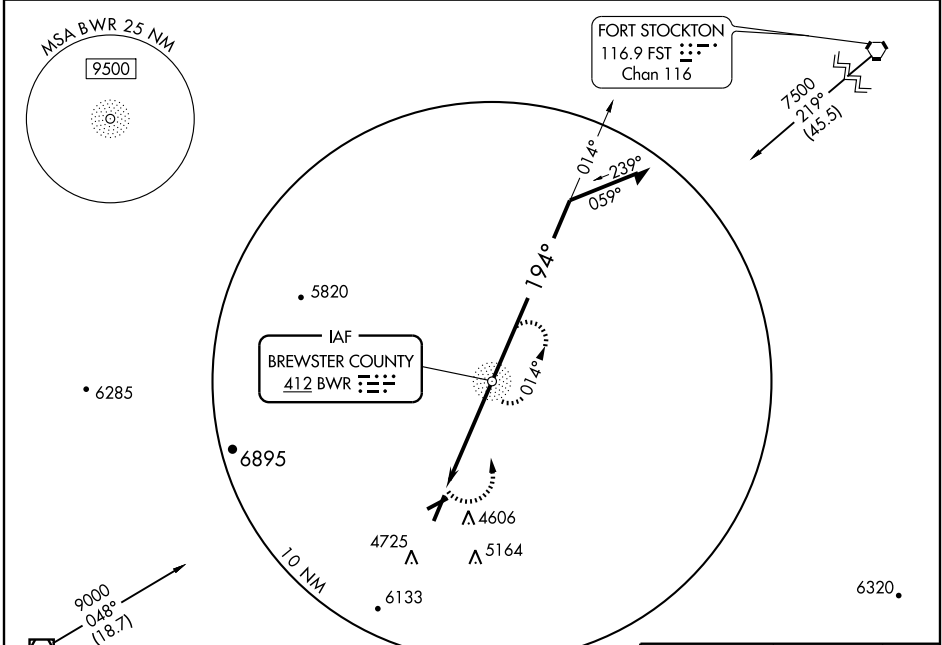


**NDB RWY 19**  
ALPINE-CASPARIS MUNI (E38)

NBD BWR <b>412</b>	APP CRS <b>194°</b>	Rwy Idg TDZE Apt Elev	<b>6003</b> <b>4480</b> <b>4513</b>
-----------------------	------------------------	-----------------------------	---

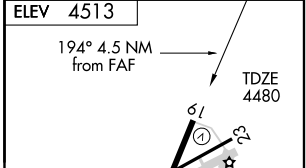
**⚠** Circling not authorized west of runway 1-19. **MISSED APPROACH:** Immediate climbing left turn to 7000 direct BWR NDB and hold.

AWOS-3 <b>119.025</b>	ALBUQUERQUE CENTER <b>135.875 292.15</b>	UNICOM <b>122.8 (CTAF) ①</b>
--------------------------	---	---------------------------------



SC-3, 22 OCT 2009 to 19 NOV 2009

SC-3, 22 OCT 2009 to 19 NOV 2009



7000	BWR 412	NDB	Remain within 10 NM
Visual glidescope indicator (VGS) and descent angle not coincident.			
1 NM	3.5 NM		

CATEGORY	A	B	C	D
S-19	5100-1¼	620 (600-1¼)	5100-1¼ 620 (600-1¼)	NA
CIRCLING	5100-1¼ 587 (600-1¼)	5120-1¼ 607 (700-1¼)	5280-2¼ 767 (800-2¼)	NA

MIRL Rwy 1-19 and 5-23 ①

FAF to MAP 3.5 NM

Knots	60	90	120	150	180
Min:Sec	3:30	2:20	1:45	1:24	1:10