

LOC/DME I-EXX <b>108.75</b> Chan 24 (Y)	APP CRS <b>058°</b>	Rwy Idg <b>5004</b> TDZE <b>733</b> Apt Elev <b>733</b>
---	------------------------	--

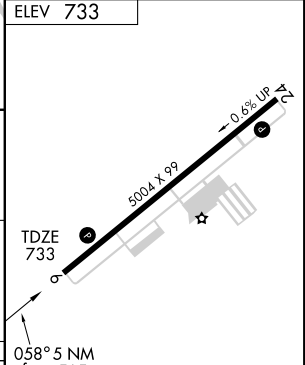
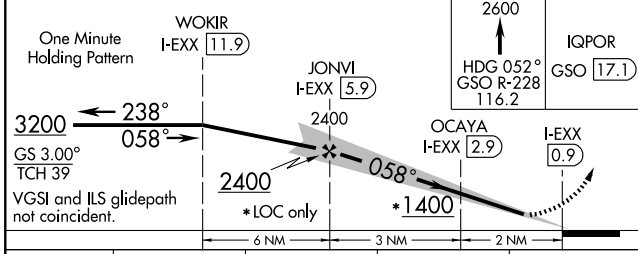
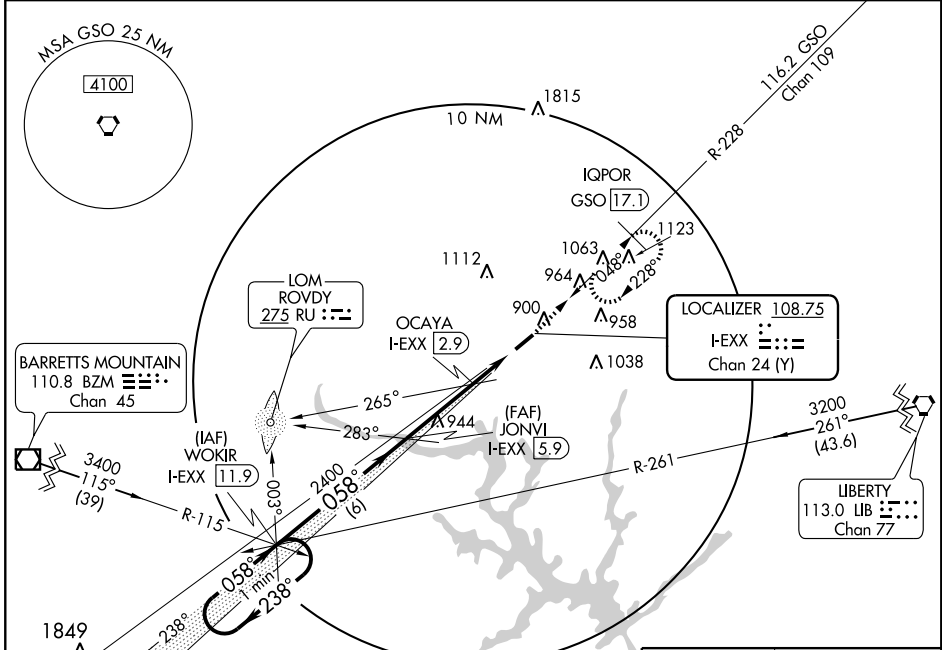
# ILS or LOC/DME RWY 6

LEXINGTON/DAVIDSON COUNTY (E.XX)

**NA** If local altimeter setting not received, use Salisbury altimeter setting and increase DA to 970 feet; increase all MDAs 40 feet.

MISSED APPROACH: Climb to 2600 via heading 052° and GSO R-228 to IQPOR/GSO 17.1 DME and hold.

AWOS-3 <b>119.825</b>	GREENSBORO APP CON <b>118.5 327.075</b>	GCO <b>135.075</b>	UNICOM <b>122.8</b> (CTAF) <b>0</b>
--------------------------	--	-----------------------	--



CATEGORY	A	B	C	D
S-ILS 6	933-1	200 (200-1)		NA
S-LOC 6	1120-1	387 (400-1)		NA
CIRCLING	1200-1	467 (500-1)	1220-1½ 487 (500-1½)	NA

058° 5 NM from FAF

MIRL Rwy 6-24  
REIL Rwy 6 and 24 **0**

SE-2, 22 OCT 2009 to 19 NOV 2009

SE-2, 22 OCT 2009 to 19 NOV 2009