

# GPS RWY 6

LEXINGTON/DAVIDSON COUNTY (E.XX)

APP CRS <b>058°</b>	Rwy Idg <b>5004</b>
	TDZE <b>733</b>
	Apt Elev <b>733</b>

**NA** Use Greensboro altimeter setting.

**MISSED APPROACH:** Climb to 1800 then climbing right turn to 2600 direct ERGOW WP and hold.

AWOS-3  
**119.825**

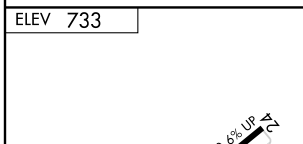
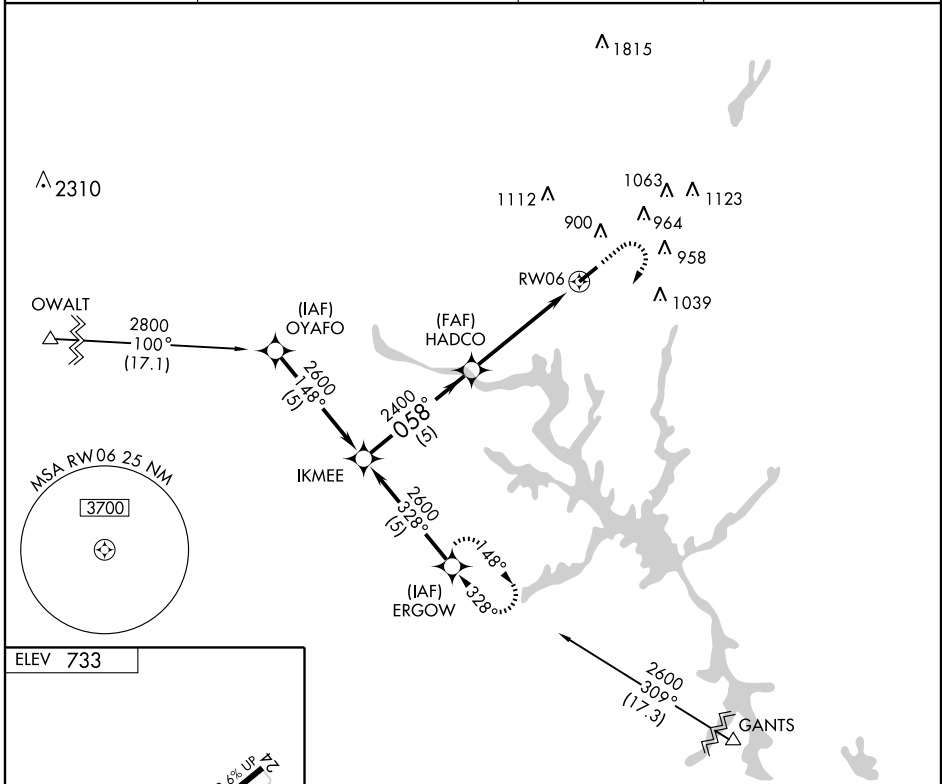
GREENSBORO APP CON  
**118.5 327.075**

GCO  
**135.075**

UNICOM  
**122.8 (CTAF) 0**

SE-2, 22 OCT 2009 to 19 NOV 2009

SE-2, 22 OCT 2009 to 19 NOV 2009



ELEV 733

MIRL Rwy 6-24  
REIL Rws 6 and 24

1800	2600	ERGOW
↑	↪	✦

Procedure Turn	NA		
IKMEE	2600	HADCO	2400
	058°		
	5 NM	5 NM	
			RW06

CATEGORY	A	B	C	D
S-6	1300-1	567 (600-1)	1300-1½ 567 (600-1½)	NA
CIRCLING	1300-1	567 (600-1)	1300-1½ 567 (600-1½)	NA

# GPS RWY 6