

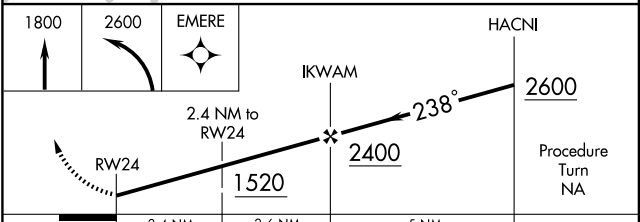
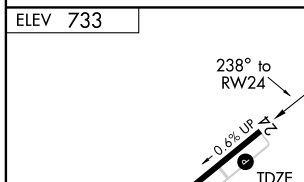
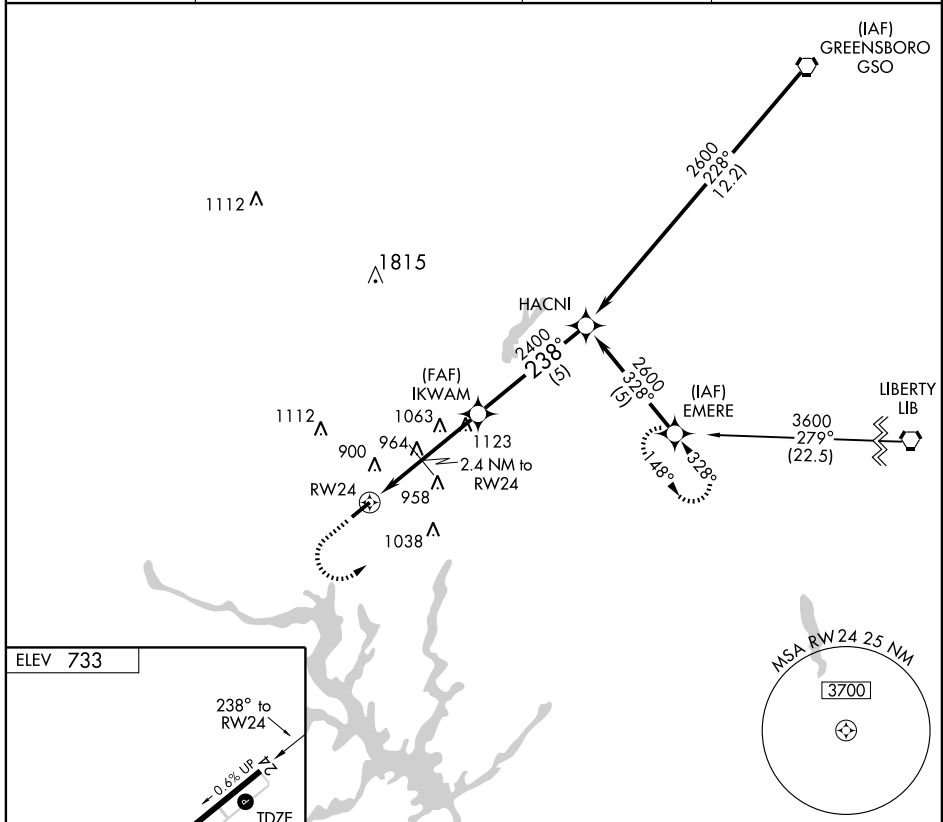
GPS RWY 24

LEXINGTON/ DAVIDSON COUNTY (E.XX)

APP CRS 238°	Rwy Idg 5004
	TDZE 733
	Apt Elev 733

Use Greensboro altimeter setting.	MISSED APPROACH: Climb to 1800 then climbing left turn to 2600 direct EMERE WP and hold.
-----------------------------------	--

AWOS-3 119.825	GREENSBORO APP CON 118.5 327.075	GCO 135.075	UNICOM 122.8 (CTAF)
--------------------------	--	-----------------------	-------------------------------



CATEGORY	A	B	C	D
S-24	1320-1	587 (600-1)	1320-1½ 587 (600-1½)	NA
CIRCLING	1320-1	587 (600-1)	1320-1½ 587 (600-1½)	NA

MIRL Rwy 6-24
REIL Rwy 6 and 24

GPS RWY 24

SE-2, 22 OCT 2009 to 19 NOV 2009

SE-2, 22 OCT 2009 to 19 NOV 2009