

SAIPAN, CQ

AL-6293 (FAA)

NDB SN <b>312</b>	APP CRS <b>246°</b>	Rwy Idg <b>8700</b>
		TDZE <b>210</b>
		Apt Elev <b>215</b>

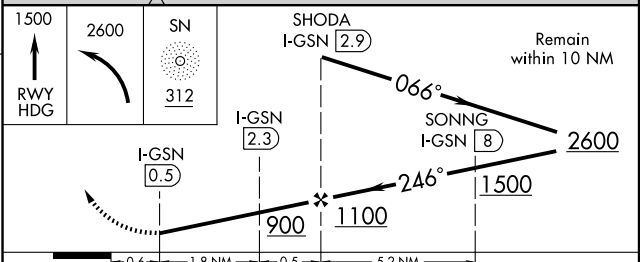
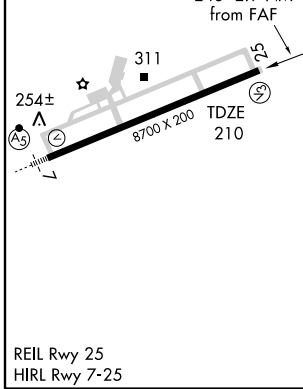
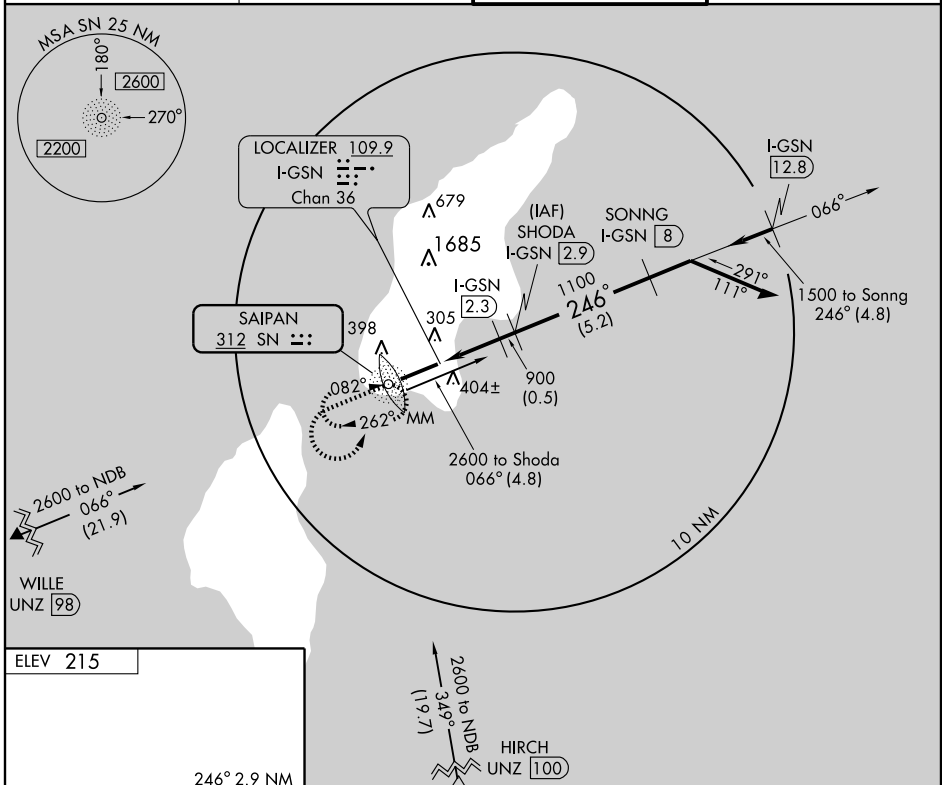
# NDB/DME RWY 25

FRANCISCO C. ADA/SAIPAN INTL (GSN)(PGSN)

▼ Cat. C, D circling not authorized north of Rwy 7-25. **ACTIVATE MALSR Rwy 7-123.6.**

MISSED APPROACH: Climb runway heading to 1500 then climbing left turn to 2600 direct SN NDB and hold.

ATIS <b>127.2</b>	GUAM APP CON <b>118.4 290.5</b>	SAIPAN TOWER <b>125.7 256.9</b>	GND CON <b>121.8</b>
----------------------	------------------------------------	------------------------------------	-------------------------



CATEGORY	A	B	C	D
S-25	720-1	510 (600-1)	720-1½	510 (600-1½)
CIRCLING	720-1	505 (600-1)	720-1½	780-2 505 (600-1½)

SAIPAN, CQ  
Amdt 2A 09071

FRANCISCO C. ADA/SAIPAN INTL (GSN)(PGSN)  
15°07'N-145°44'E  
**NDB/DME RWY 25**

PAC, 22 OCT 2009 to 17 DEC 2009

PAC, 22 OCT 2009 to 17 DEC 2009