

SAIPAN, CQ

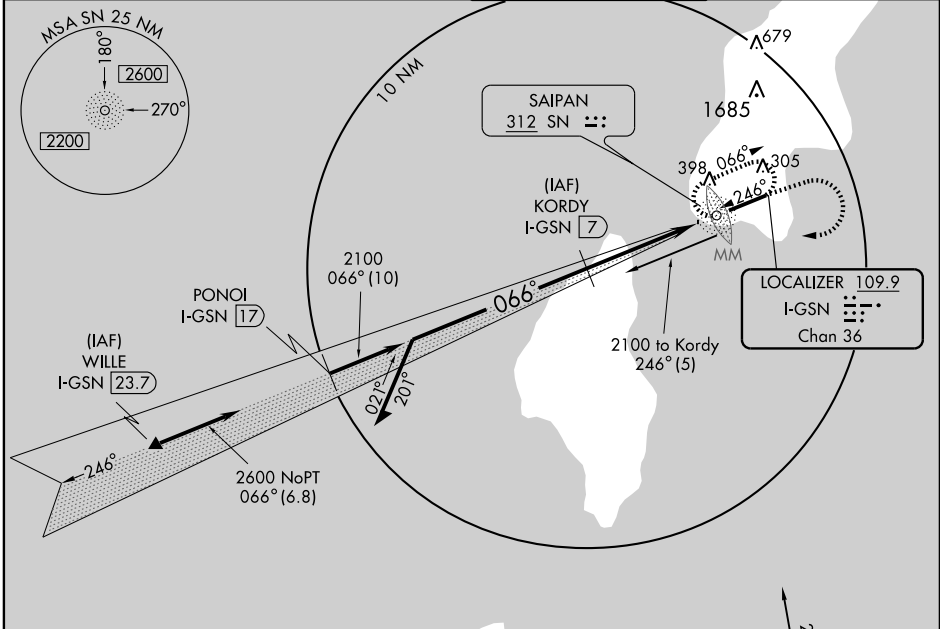
AL-6293 (FAA)

LOC/DME I-GSN <b>109.9</b> Chan <b>36</b>	APP CRS <b>066°</b>	Rwy Idg <b>8700</b> TDZE <b>215</b> Apt Elev <b>215</b>
---	------------------------	---

**ILS or LOC/DME RWY 7**  
FRANCISCO C. ADA/SAIPAN INTL (GSN)(PGSN)

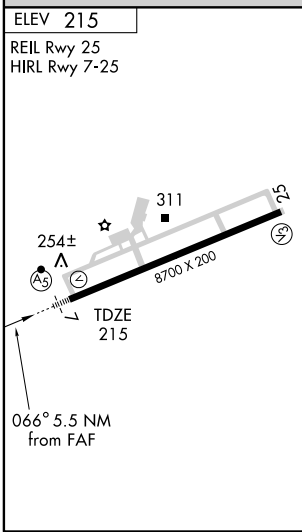
<p>▼ Cat. C, D circling not authorized north of Rwy 7-25. Cat. D S-LOC visibility increased ¼ mile for inoperative MM or MALSR.</p>	<p>MALSR </p>	<p>MISSED APPROACH: Climb to 1600 heading 070° then climbing right turn to 2600 direct SN NDB and hold.</p>
---	---------------	---

<p>ATIS <b>127.2</b></p>	<p>GUAM APP CON <b>118.4 290.5</b></p>	<p>SAIPAN TOWER <b>125.7 256.9</b></p>	<p>GND CON <b>121.8</b></p>
------------------------------	--	--	---------------------------------

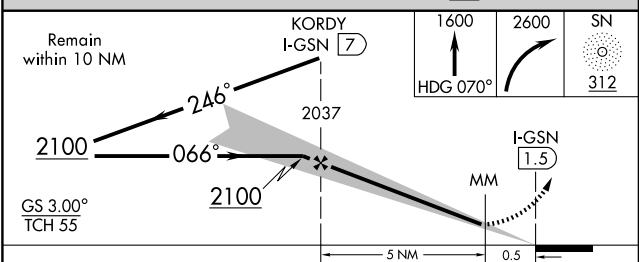


PAC, 22 OCT 2009 to 17 DEC 2009

PAC, 22 OCT 2009 to 17 DEC 2009



**DME REQUIRED**



CATEGORY	A	B	C	D
S-ILS 7		415-½	200 (200-½)	
S-LOC 7		480-½	265 (300-½)	480-¾ 265 (300-¾)
CIRCLING	720-1	505 (600-1)	720-1½ 505 (600-1½)	780-2 565 (600-2)

SAIPAN, CQ  
Amdt 5A 09071

FRANCISCO C. ADA/SAIPAN INTL (GSN)(PGSN)  
15°07'N-145°44'E  
**ILS or LOC/DME RWY 7**