

SAIPAN, CQ

AL-6293 (FAA)

GPS RWY 7

FRANCISCO C. ADA/SAIPAN INTL (GSN)(PGSN)

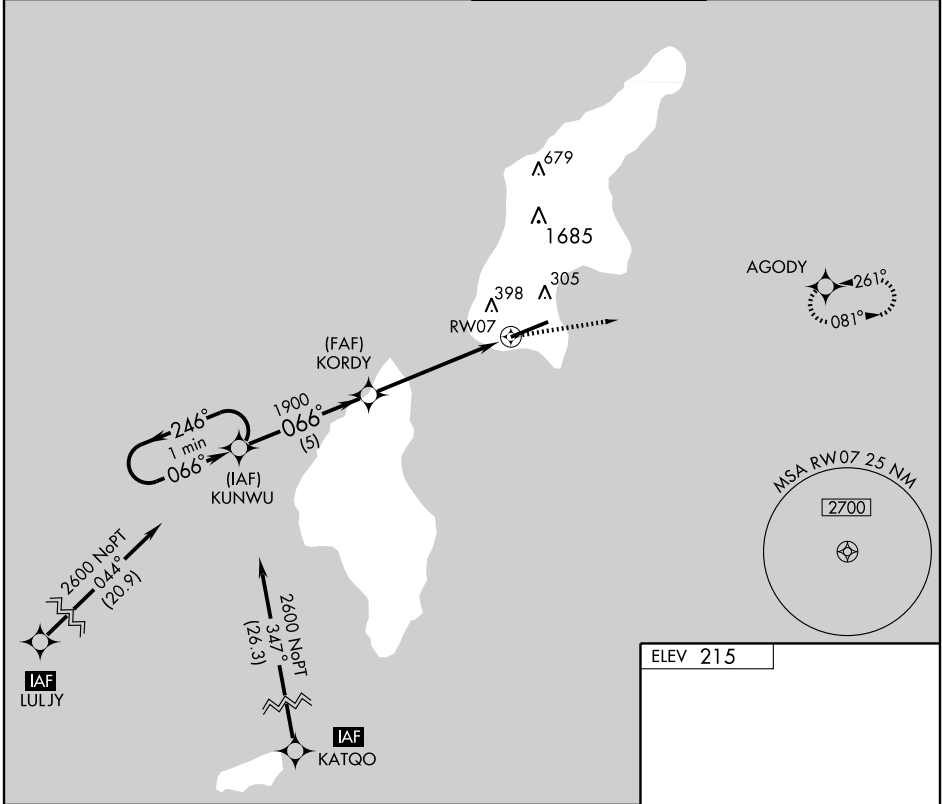
APP CRS	Rwy Idg	8700
066°	TDZE	215
	Apt Elev	215

IAF ARM Approach mode prior to IAF.
 Cat. C, D circling not authorized north of Rwy 7-25.
 Inoperative table does not apply to Cat. D.



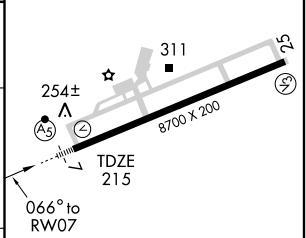
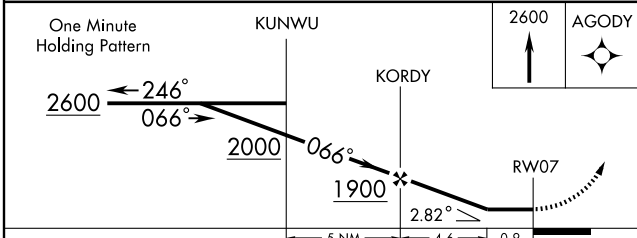
MISSED APPROACH: Climb to 2600
 direct AGODY WP and hold.

ATIS 127.2	GUAM APP CON 118.4 290.5	SAIPAN TOWER 125.7 256.9	GND CON 121.8
----------------------	------------------------------------	------------------------------------	-------------------------



PAC, 22 OCT 2009 to 17 DEC 2009

PAC, 22 OCT 2009 to 17 DEC 2009



CATEGORY	A	B	C	D
S-7	520-1/2 305 (400-1/2)			520-1 305 (400-1)
CIRCLING	720-1	505 (600-1)	720-1 1/2 505 (600-1 1/2)	780-2 565 (600-2)

REIL Rwy 25
 HIRL Rwy 7-25

SAIPAN, CQ
 Orig-B 09071

FRANCISCO C. ADA/SAIPAN INTL (GSN)(PGSN)
 15°07'N-145°44'E
GPS RWY 7