

SAIPAN, CQ

AL-6293 (FAA)

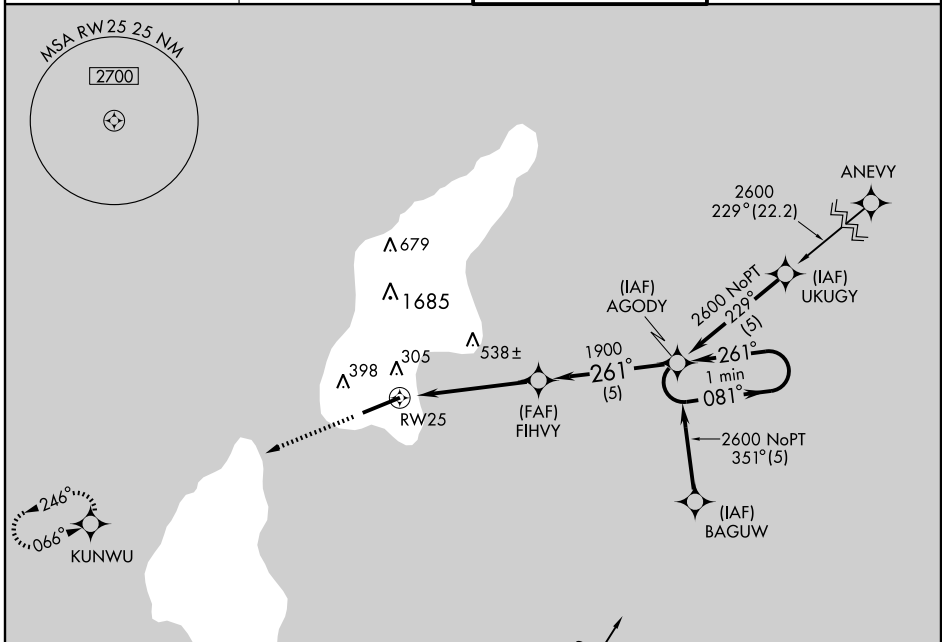
GPS RWY 25

FRANCISCO C. ADA/SAIPAN INTL (GSN)(PGSN)

APP CRS 261°	Rwy Idg 8700
	TDZE 210
	Apt Elev 215

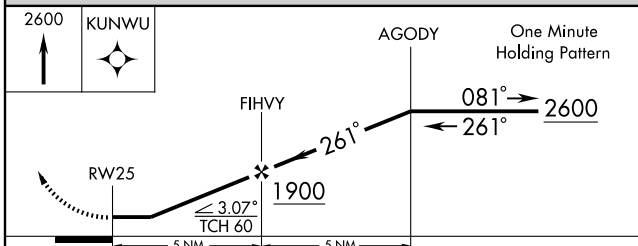
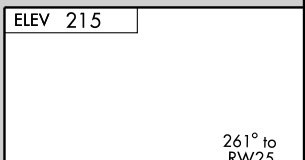
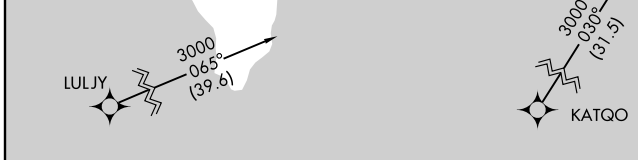
<p>▼ ▲</p> <p>Cat. C, D circling not authorized north of Rwy 7-25.</p>	<p>MISSED APPROACH: Climb to 2600 direct KUNWU WP and hold.</p>
--	---

<p>ATIS 127.2</p>	<p>GUAM APP CON 118.4 290.5</p>	<p>SAIPAN TOWER 125.7 256.9</p>	<p>GND CON 121.8</p>
------------------------------	--	--	---------------------------------

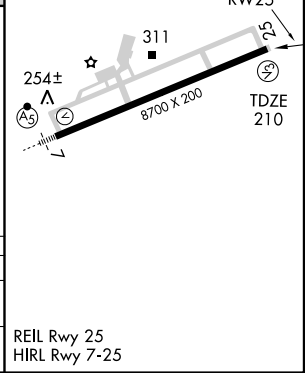


PAC, 22 OCT 2009 to 17 DEC 2009

PAC, 22 OCT 2009 to 17 DEC 2009



CATEGORY	A	B	C	D
S-25	580-1 370 (400-1)			580-1¼ 370 (400-1¼)
CIRCLING	720-1	505 (600-1)	720-1½ 505 (600-1½)	780-2 565 (600-2)



SAIPAN, CQ
Amdt 1B 09071

FRANCISCO C. ADA/SAIPAN INTL (GSN)(PGSN)
15°07'N-145°44'E

GPS RWY 25