

WASHINGTON, IOWA

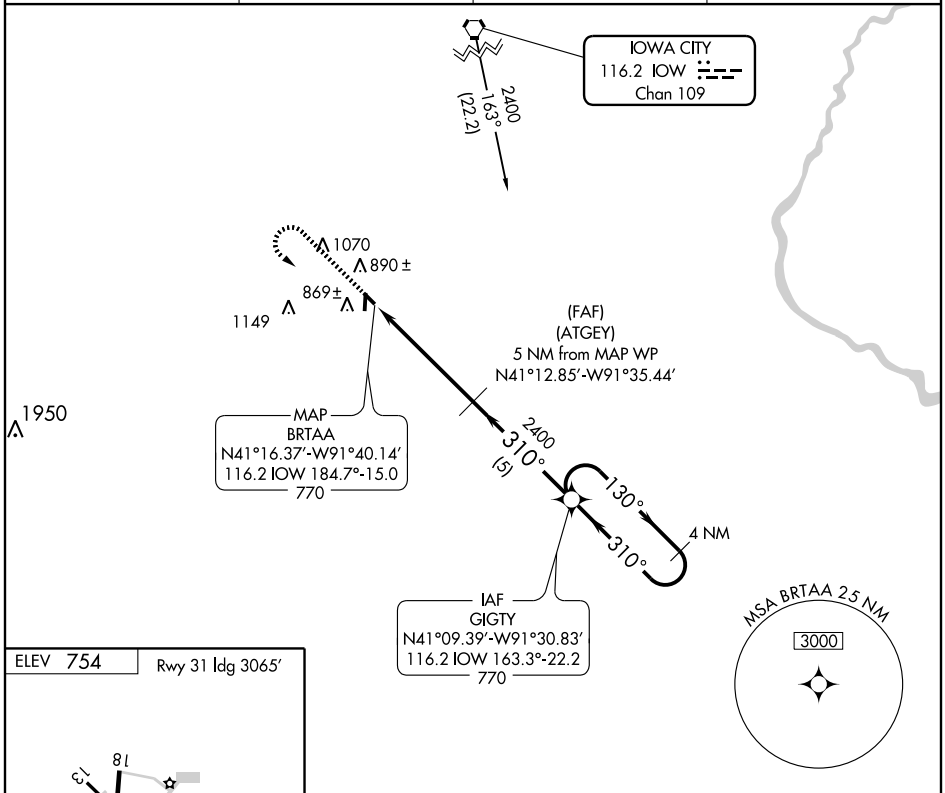
AL-6289 (FAA)

VOR/DME RNAV or GPS RWY 31

WASHINGTON MUNI (AWG)

VORTAC IOW 116.2 Chan 109	APP CRS 310°	Rwy ldg TDZE 754 Apt Elev 754
---	------------------------	---

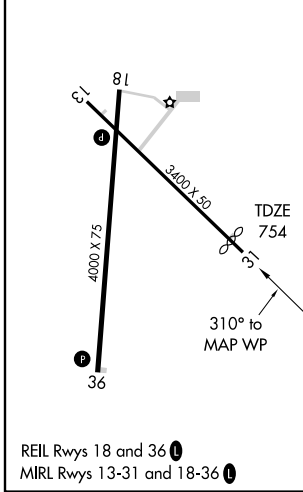
		MISSED APPROACH: Climb to 2400 then left turn direct GIGTY WP and hold.	
AWOS-3 127.825	CHICAGO CENTER 135.6 370.95	GCO 121.725	UNICOM 122.7 (CTAF)



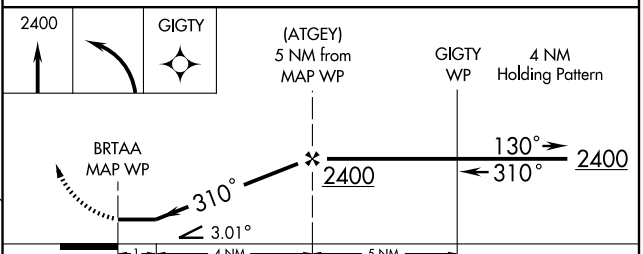
NC-3, 22 OCT 2009 to 19 NOV 2009

NC-3, 22 OCT 2009 to 19 NOV 2009

ELEV 754 Rwy 31 ldg 3065'



REIL Rwy 18 and 36
MIRL Rwy 13-31 and 18-36



CATEGORY	A	B	C	D
S-31	1120-1 366 (400-1)			NA
CIRCLING	1280-1 526 (600-1)	1320-1 566 (600-1)	1320-1½ 566 (600-1½)	NA

WASHINGTON, IOWA
Amdt 4B 05356

41°17'N-91°41'W

WASHINGTON MUNI (AWG)

VOR/DME RNAV or GPS RWY 31