

RNAV (GPS) RWY 9

OTTAWA / PUTNAM COUNTY (OWX)

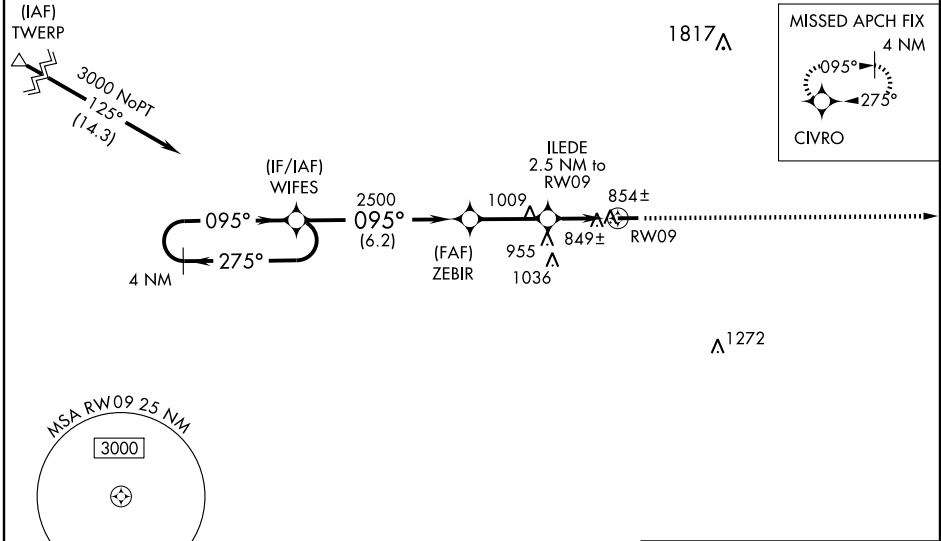
WAAS CH 86514 W09A	APP CRS 095°	Rwy Idg 4427 TDZE 759 Apt Elev 764
--	------------------------	---

⚠ Baro-VNAV NA when using Findlay altimeter setting. For uncompensated Baro-VNAV systems, LNAV/VNAV NA below -16°C (4°F) or above 54°C (130°F). DME/DME RNP-0.3 NA.
⚠ NA Visibility reduction by helicopters NA. When local altimeter setting not received, use Findlay altimeter setting and increase all DA/MDA 40 feet, increase LPV all Cats visibility ¼ mile. VDP NA when using Findlay altimeter setting.

MISSED APPROACH:
Climb to 3000 direct CIVRO and hold.

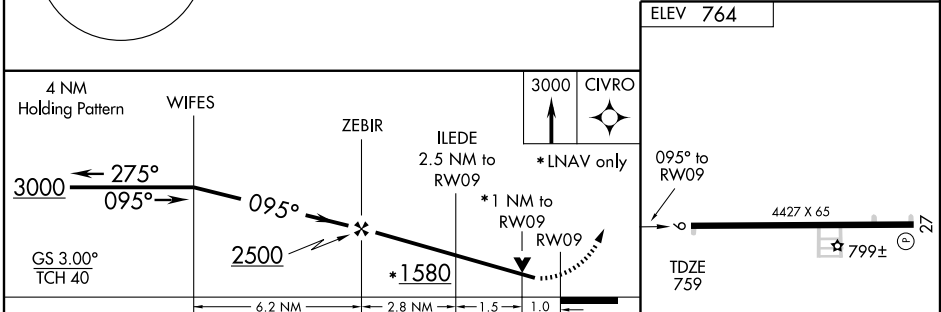
AWOS-3 120.525	TOLEDO APP CON 120.8 317.55	UNICOM 122.7 (CTAF) 0
--------------------------	---------------------------------------	---------------------------------

Procedure NA for arrivals at TWERP via V8-422 westbound and V96 westbound.



EC-2, 22 OCT 2009 to 19 NOV 2009

EC-2, 22 OCT 2009 to 19 NOV 2009



CATEGORY	A	B	C	D
LPV DA	1047-1	288 (300-1)		NA
LNAV/ VNAV DA	1146-1½	387 (400-1½)		NA
LNAV MDA	1120-1	361 (400-1)		NA
CIRCLING	1200-1 436 (500-1)	1220-1 456 (500-1)		NA

ELEV 764

3000 CIVRO

095° to RWY09

4427 X 65

799±

TDZE 759

REIL Rwy 9 and 27 0

HIRL Rwy 9-27 0