

OTTAWA, OHIO

AL-6287 (FAA)

# RNAV (GPS) RWY 27

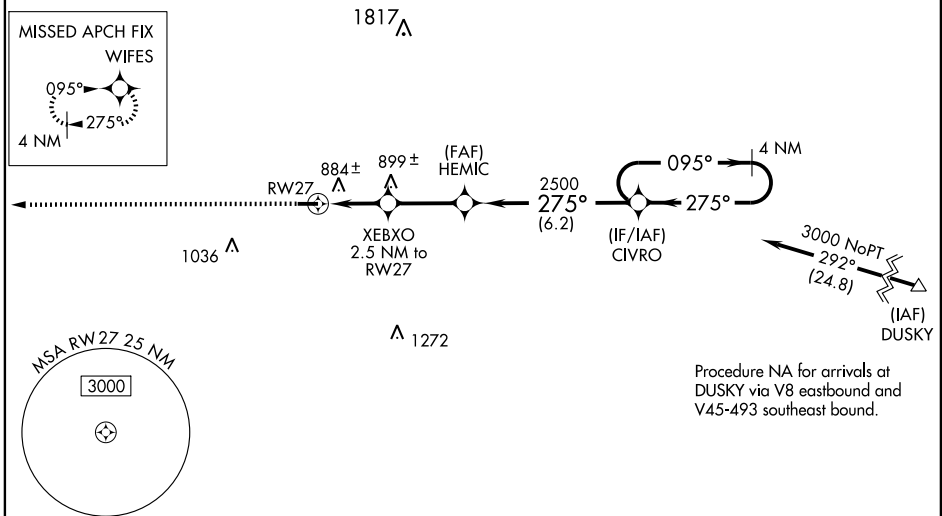
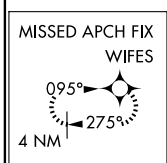
OTTAWA / PUTNAM COUNTY (OWX)

WAAS CH <b>97614</b> W27A	APP CRS <b>275°</b>	Rwy Idg <b>4427</b> TDZE <b>764</b> Apt Elev <b>764</b>
---------------------------------	------------------------	---

Baro-VNAV NA when using Findlay altimeter setting. For uncompensated Baro-VNAV systems, LNAV/VNAV NA below -1.6°C (4°F) or above 54°C (130°F). DME/DME RNP-0.3 NA. Visibility reduction by helicopters NA. When local altimeter setting not received, use Findlay altimeter setting and increase all DA/MDA 40 feet, increase LPV and LNAV/VNAV all Cats visibility ¼ mile. VDP NA when using Findlay altimeter setting.

MISSED APPROACH:  
Climb to 3000 direct WIFES and hold.

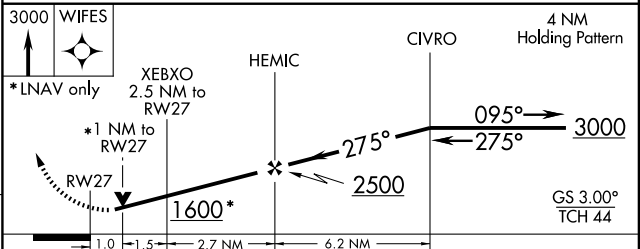
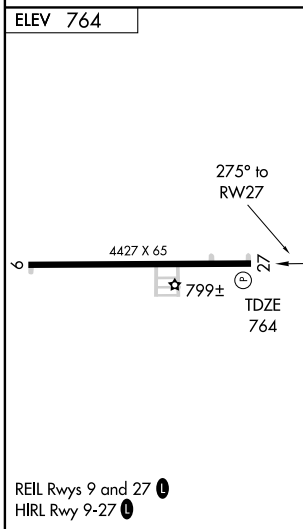
AWOS-3 <b>120.525</b>	TOLEDO APP CON <b>120.8 317.55</b>	UNICOM <b>122.7 (CTAF) 0</b>
--------------------------	---------------------------------------	---------------------------------



Procedure NA for arrivals at DUSKY via V8 eastbound and V45-493 southeast bound.

EC-2, 22 OCT 2009 to 19 NOV 2009

EC-2, 22 OCT 2009 to 19 NOV 2009



CATEGORY	A	B	C	D
LPV DA	1049-1	285 (300-1)		NA
LNAV/VNAV DA	1186-1½	422 (500-1½)		NA
LNAV MDA	1140-1	376 (400-1)		NA
CIRCLING	1200-1 436 (500-1)	1220-1 456 (500-1)		NA

OTTAWA, OHIO  
Orig 09239

41°02'N - 83°59'W

# OTTAWA / PUTNAM COUNTY (OWX) RNAV (GPS) RWY 27