

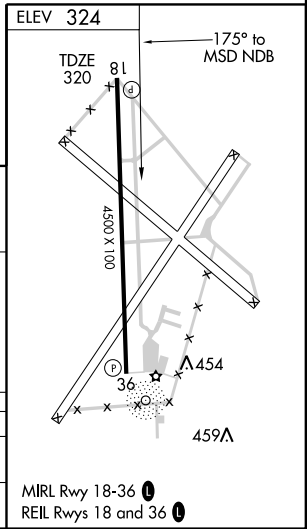
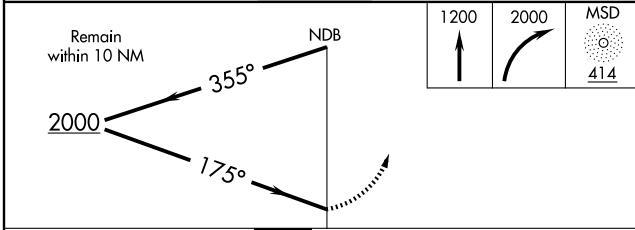
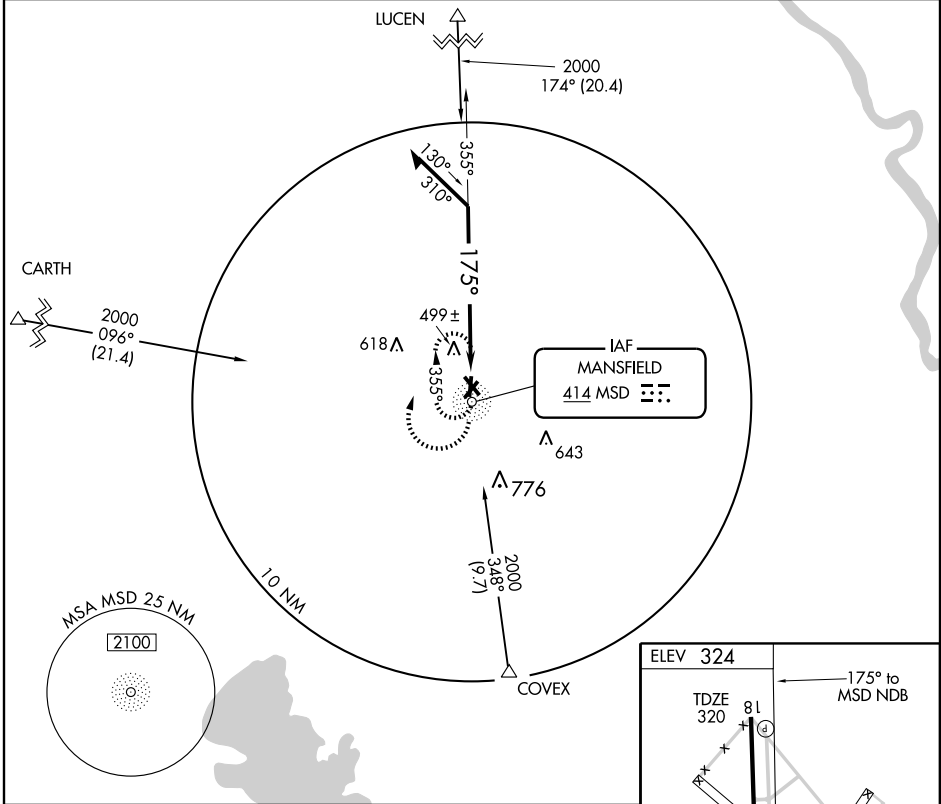
NDB RWY 18

MANSFIELD/C E 'RUSTY' WILLIAMS (3F3)

NDB MSD 414	APP CRS 175°	Rwy Idg TDZE Apt Elev	4500 320 324
-----------------------	------------------------	-----------------------------	---

▲ NA Use Shreveport Regional altimeter setting. MISSED APPROACH: Climb to 1200, then climbing right turn to 2000 direct MSD NDB and hold.

SHREVEPORT APP CON ★ **119.9 335.55** UNICOM **122.8 (CTAF) 0**



CATEGORY	A	B	C	D
S-18	980-1 660 (700-1)		980-1¾ 660 (700-1¾)	NA
CIRCLING	980-1 656 (700-1)		980-1¾ 656 (700-1¾)	NA

SC-4, 22 OCT 2009 to 19 NOV 2009

SC-4, 22 OCT 2009 to 19 NOV 2009