

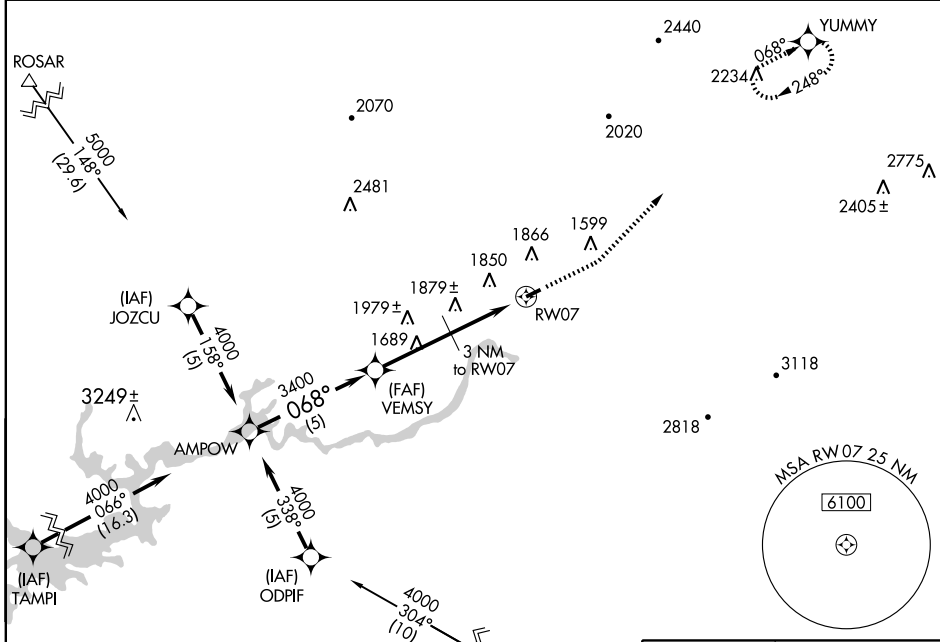
GPS RWY 7

ROGERSVILLE/HAWKINS COUNTY (RVN)

APP CRS 068°	Rwy Idg 3502
	TDZE 1255
	Apt Elev 1255

<p>▼ Obtain local altimeter setting on CTAF, if not received use Tri-Cities Rgnl altimeter setting.</p> <p>▲ NA</p>	<p>MISSED APPROACH: Climb to 3000 then climbing left turn to 4500 direct YUMMY WP and hold.</p>
---	--

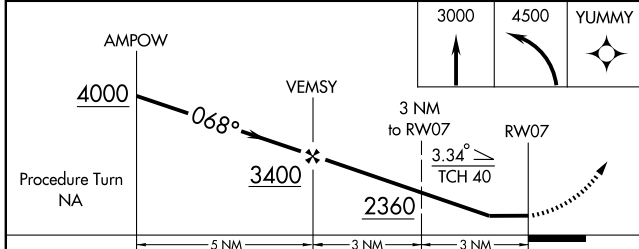
<p>TRI CITY APP CON ★</p> <p>119.25 317.5</p>	<p>UNICOM</p> <p>122.8 (CTAF)</p>
--	--



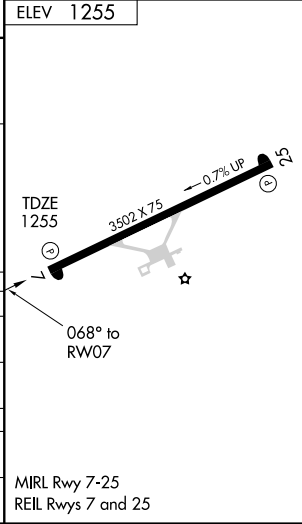
SE-1, 22 OCT 2009 to 19 NOV 2009

SE-1, 22 OCT 2009 to 19 NOV 2009

ELEV 1255



CATEGORY	A	B	C	D
S-7	2140-1¼	885 (900-1¼)	2140-2¾ 885 (900-2¾)	NA
CIRCLING	2180-1¼	925 (1000-1¼)	2180-2¾ 925 (1000-2¾)	NA
TRI-CITIES RGNL ALTIMETER SETTING MINIMUMS				
S-7	2220-1¼ 965 (1000-1¼)	2220-1½ 965 (1000-1½)	2220-3 965 (1000-3)	NA
CIRCLING	2260-1¼ 1005 (1100-1¼)	2260-1½ 1005 (1100-1½)	2260-3 1005 (1100-3)	NA



MIRL Rwy 7-25
REIL Rwy 7 and 25