

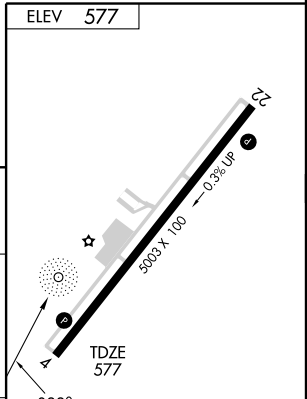
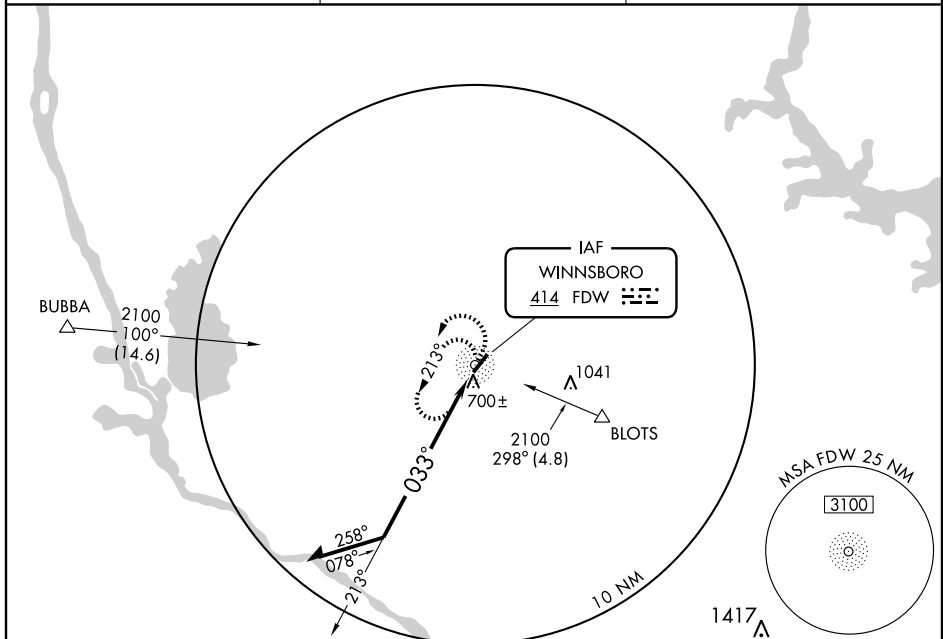
# NDB RWY 4

WINNSBORO/ FAIRFIELD COUNTY (F'DW)

NDB FDW	APP CRS	Rwy Idg	<b>5003</b>
<b>414</b>	<b>033°</b>	TDZE	<b>577</b>
		Apt Elev	<b>577</b>

**▲** NA Use Columbia altimeter setting. MISSED APPROACH: Climbing left turn to 2100 in FDW NDB holding pattern.

AWOS-3 <b>119.075</b>	COLUMBIA APP CON <b>133.4 285.6</b>	UNICOM <b>123.05 (CTAF) 0</b>
--------------------------	--	----------------------------------



Remain within 10 NM	NDB	2100	FDW
		213°	033°
		078°	213°
		258°	033°
		213°	033°

CATEGORY	A	B	C	D
S-4	1160-1	583 (600-1)	1160-1½ 583 (600-1½)	1160-1¾ 583 (600-1¾)
CIRCLING	1160-1	583 (600-1)	1160-1½ 583 (600-1½)	1160-2 583 (600-2)

MIRL Rwy 4-22 0					
Knots	60	90	120	150	180
Min:Sec					

SE-2, 22 OCT 2009 to 19 NOV 2009

SE-2, 22 OCT 2009 to 19 NOV 2009