

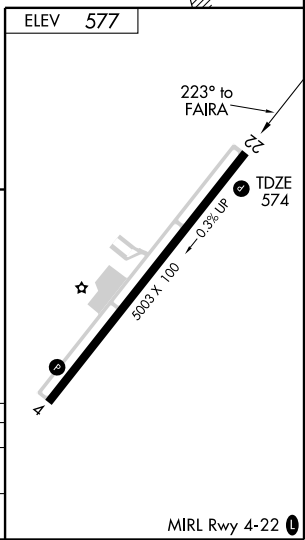
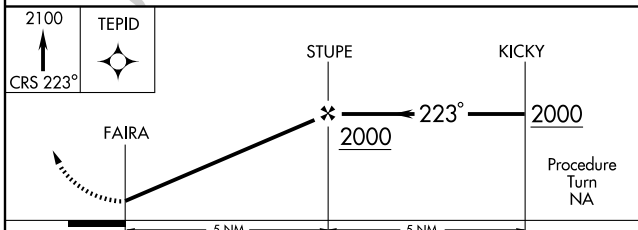
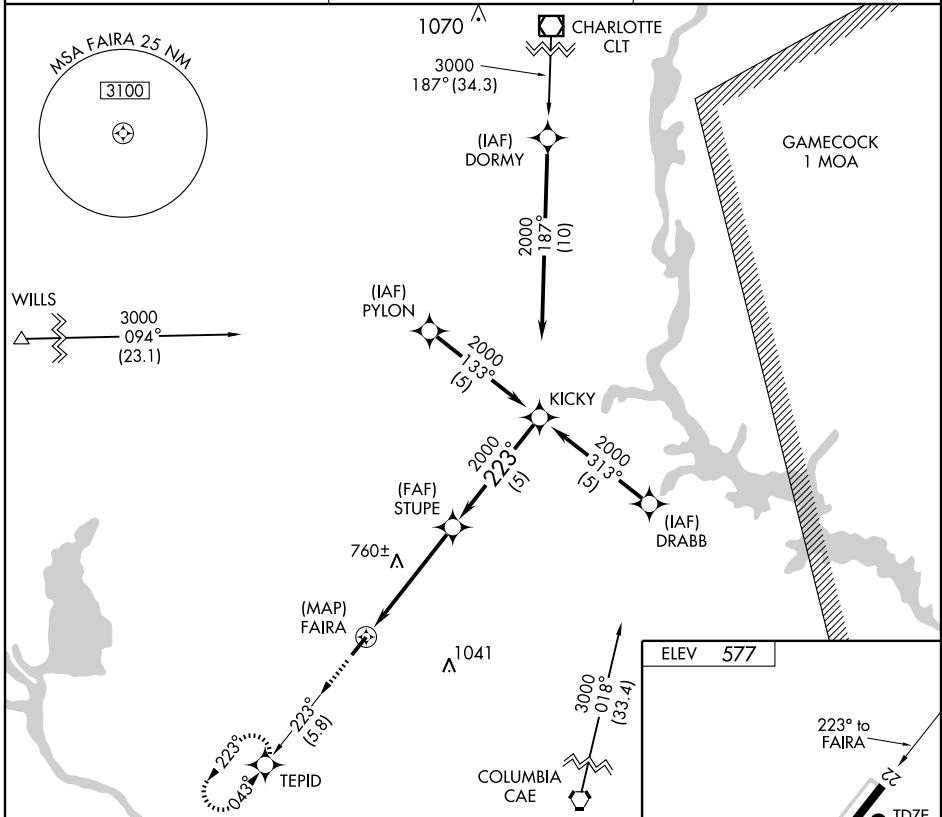
GPS RWY 22

WINNSBORO/ FAIRFIELD COUNTY (FDW)

APP CRS 223°	Rwy Idg 5003
	TDZE 574
	Apt Elev 577

▲ NA Use Columbia Metropolitan altimeter setting. MISSED APPROACH: Climb to 2100 via 223° course to TEPID WP and hold.

AWOS-3 119.075	COLUMBIA APP CON 133.4 285.6	UNICOM 123.05 (CTAF) 0
--------------------------	----------------------------------------	----------------------------------



CATEGORY	A	B	C	D
S-22	1160-1 586 (600-1)	1160-1½ 586 (600-1½)	1160-1¾ 586 (600-1¾)	1160-2 586 (600-2)
CIRCLING	1160-1 583 (600-1)	1160-1½ 583 (600-1½)	1160-2 583 (600-2)	

SE-2, 22 OCT 2009 to 19 NOV 2009

SE-2, 22 OCT 2009 to 19 NOV 2009