

RNAV (GPS) RWY 33

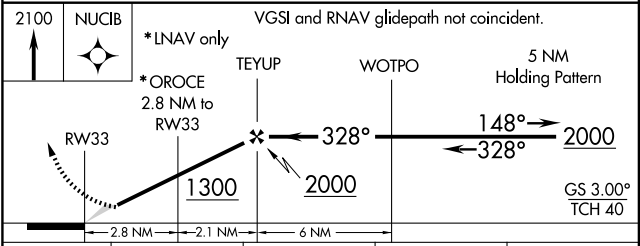
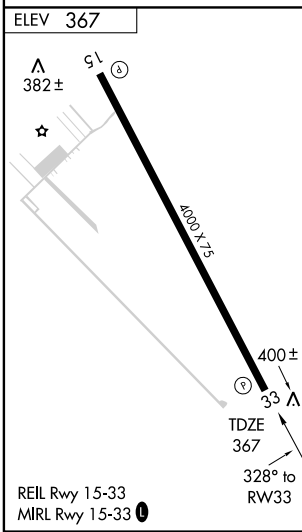
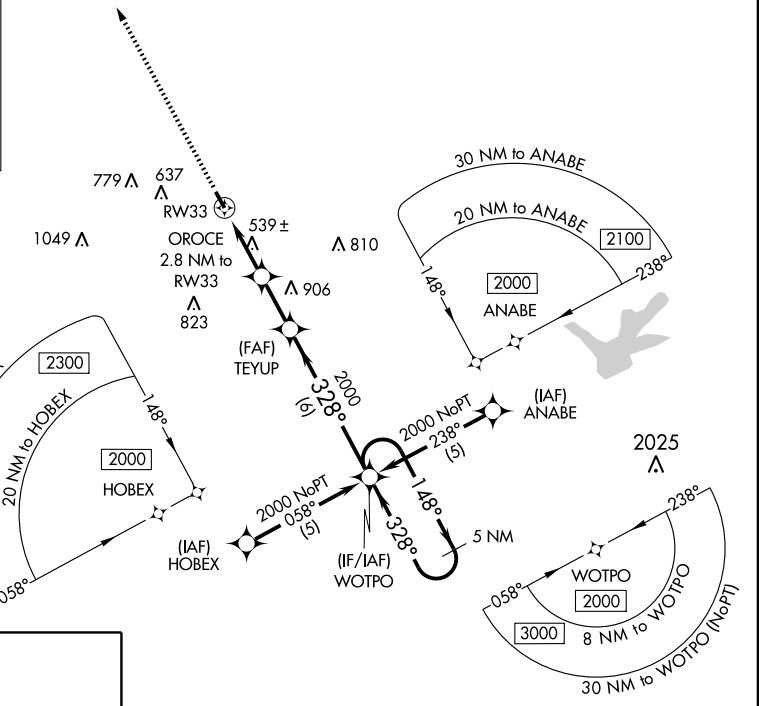
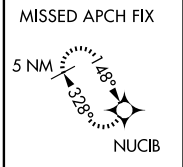
BRYAN/COULTER FIELD (CFD)

WAAS CH 70603 W33A	APP CRS 328°	Rwy Idg TDZE 367 Apt Elev 367	4000
---------------------------------	------------------------	---	-------------

T BARO-VNAV NA. DME/DME RNP-0.3 NA. Use College Station altimeter setting; if not received, use Caldwell Muni altimeter setting and increase all DAs 31 feet and all MDAs 40 feet.

MISSED APPROACH:
Climb to 2100 direct NUCIB and hold.

COLLEGE STATION ASOS 126.85	HOUSTON CENTER 120.4 371.9	UNICOM 123.0 (CTAF) 0
---------------------------------------	--------------------------------------	---------------------------------



CATEGORY	A	B	C	D
LPV DA	642-1	275 (300-1)		NA
LNAV/VNAV DA	695-1¼	328 (400-1¼)		NA
LNAV MDA	880-1	513 (600-1)		NA
CIRCLING	880-1	513 (600-1)		NA

SC-5, 22 OCT 2009 to 19 NOV 2009

SC-5, 22 OCT 2009 to 19 NOV 2009