

BRYAN, TEXAS

AL-6276 (FAA)

RNAV (GPS) RWY 15

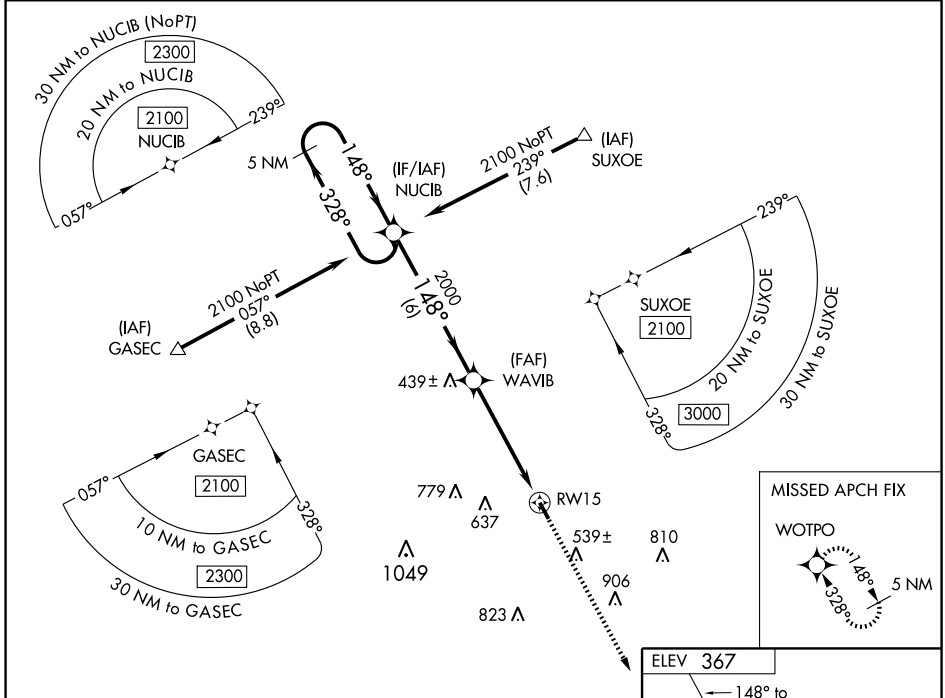
BRYAN/COULTER FIELD (CFD)

WAAS CH 69403 W15A	APP CRS 148°	Rwy Idg TDZE 4000 361 Apt Elev 367
--	------------------------	--

⚠ NA BARO-VNAV NA. DME/DME RNP-0.3 NA. Visibility reduction by helicopters NA.
W Use College Station altimeter setting; if not received, use Caldwell Muni altimeter setting and increase all DAs 31 feet and all MDAs 40 feet.

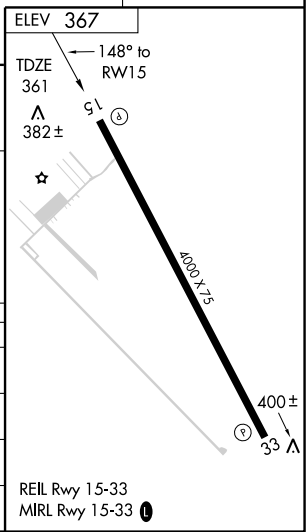
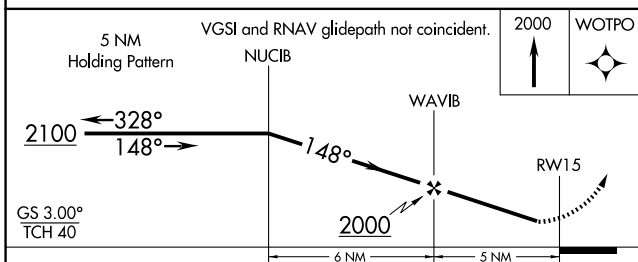
MISSED APPROACH:
 Climb to 2000 direct
 WOTPO and hold.

COLLEGE STATION ASOS 126.85	HOUSTON CENTER 120.4 371.9	UNICOM 123.0 (CTAF) 0
---------------------------------------	--------------------------------------	---------------------------------



SC-5, 22 OCT 2009 to 19 NOV 2009

SC-5, 22 OCT 2009 to 19 NOV 2009



CATEGORY	A	B	C	D
LPV DA	636-1	275 (300-1)		NA
LNAV/VNAV DA	707-1¼	346 (400-1¼)		NA
LNAV MDA	720-1	359 (400-1)		NA
CIRCLING	740-1 373 (400-1)	820-1 453 (500-1)		NA

BRYAN, TEXAS
 Orig 08101

30° 43' N-96° 20' W

RNAV (GPS) RWY 15