

HALLOCK, MINNESOTA

AL-6275 (FAA)

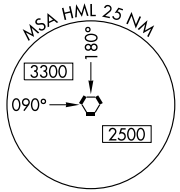
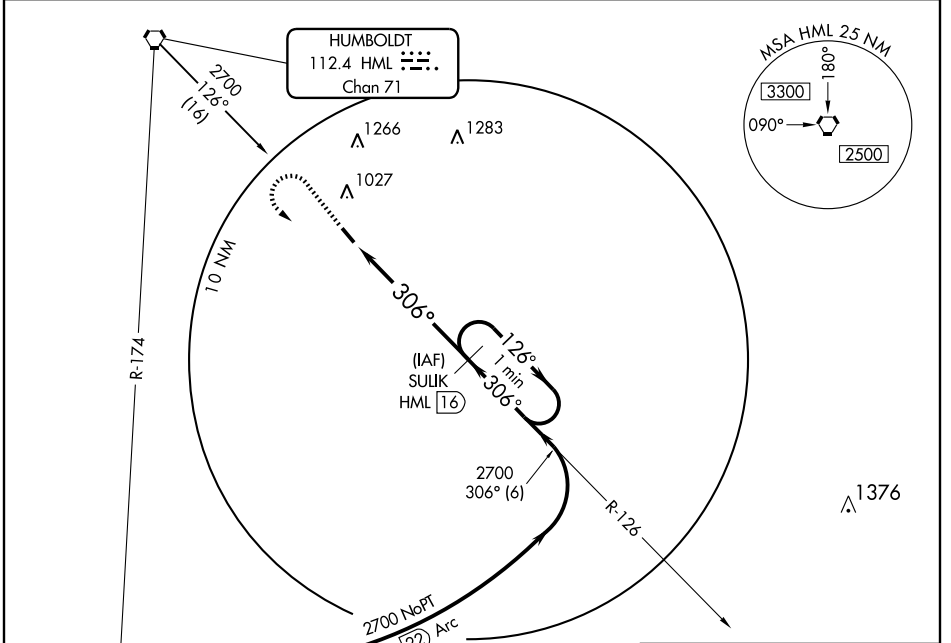
VORTAC HML 112.4 Chan 71	APP CRS 306°	Rwy Idg TDZE Apt Elev	4007 819 819
--	------------------------	-----------------------------	---

VOR/DME RWY 31

HALLOCK MUNI (HCO)

▲ NA	MISSED APPROACH: Climb to 2000 then climbing left turn to 2700 via HML R-126 to SULIK and hold.
-------------	---

AWOS-3 126.475	MINNEAPOLIS CENTER 132.15 269.6	UNICOM 122.8 (CTAF) ①
--------------------------	---	--



NC-1, 22 OCT 2009 to 19 NOV 2009

NC-1, 22 OCT 2009 to 19 NOV 2009

2000

2700
HML R-126

HML 10.2

HML 11.3

HML 16

1.2

4.7 NM

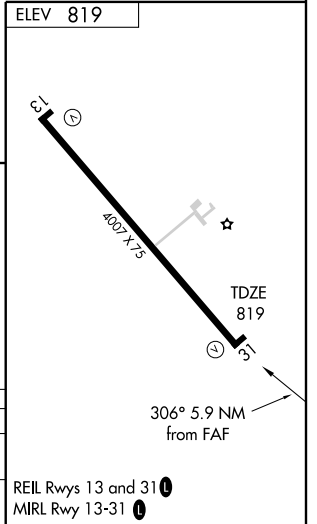
306°

2700

126°

306°

One Minute Holding Pattern



	2000	2700	SULIK HML 16	SULIK HML 16	
	↑	HML R-126	HML 16	HML 16	
		HML 10.2	HML 11.3	126°	2700
			306°	306°	
			≤ 2.98°		
			TCH 30		
			1.2	4.7 NM	

CATEGORY	A	B	C	D
S-31	1220-1 401 (500-1)		1220-1¼ 401 (500-1¼)	
CIRCLING	1380-1 561 (600-1)		1380-1½ 561 (600-1½)	1380-2 561 (600-2)

HALLOCK, MINNESOTA
Amdt 7 09295

48°45'N-96°57'W

HALLOCK MUNI (HCO) VOR/DME RWY 31