

HALLOCK, MINNESOTA

AL-6275 (FAA)

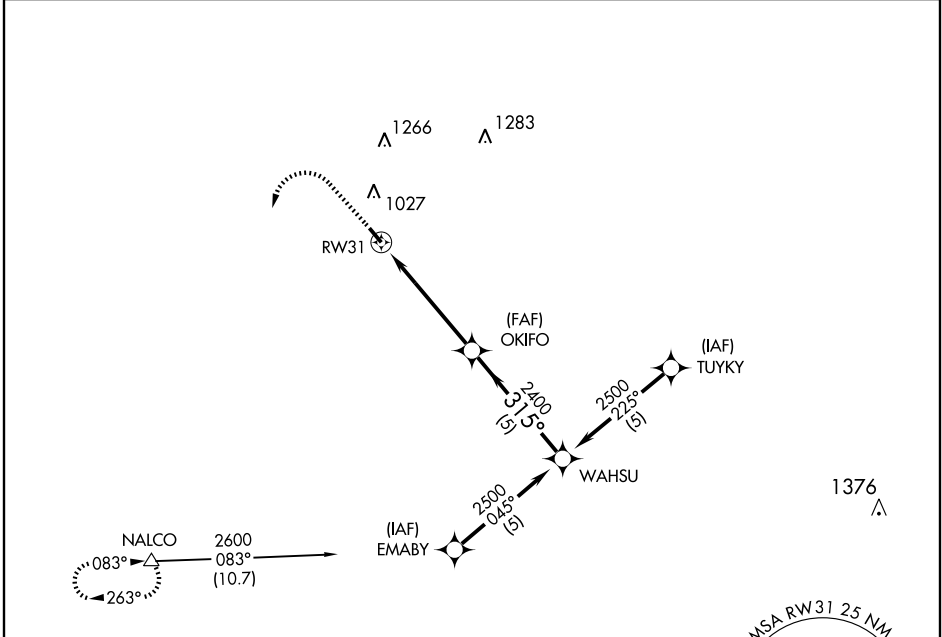
GPS RWY 31

HALLOCK MUNI (HCO)

APP CRS 315°	Rwy Idg 4007
	TDZE 819
	Apt Elev 819

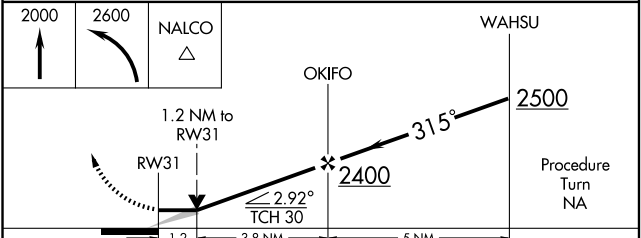
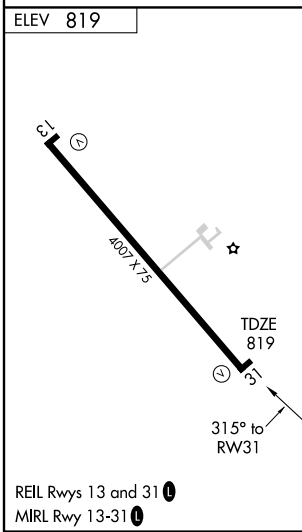
NA MISSED APPROACH: Climb to 2000 then climbing left turn to 2600 direct NALCO WP and hold.

AWOS-3 126.475	MINNEAPOLIS CENTER 132.15 269.6	UNICOM 122.8 (CTAF)
--------------------------	---	-------------------------------



NC-1, 22 OCT 2009 to 19 NOV 2009

NC-1, 22 OCT 2009 to 19 NOV 2009



CATEGORY	A	B	C	D
S-31	1220-1 401 (500-1)		1220-1½ 401 (500-1½)	
CIRCLING	1380-1 561 (600-1)		1380-1½ 561 (600-1½)	1380-2 561 (600-2)

HALLOCK, MINNESOTA
Orig 09015

48°45'N-96°57'W

HALLOCK MUNI (HCO) GPS RWY 31