

WISCASSET, MAINE

AL-6265 (FAA)

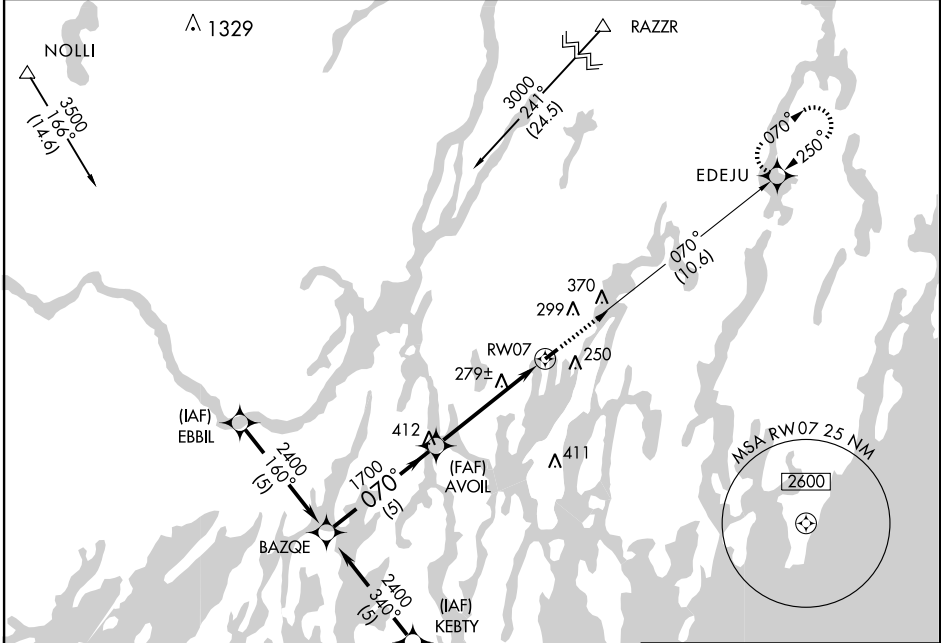
GPS RWY 7

WISCASSET (IWI)

APP CRS	Rwy Idg	3397
070°	TDZE	70
	Apt Elev	70

<p>▼ CIRCLING NA Southeast RWY 7-25</p> <p>▲ NA</p>	<p>MISSED APPROACH: Climb to 2000 via 070° course to EDEJU WP and hold.</p>
---	---

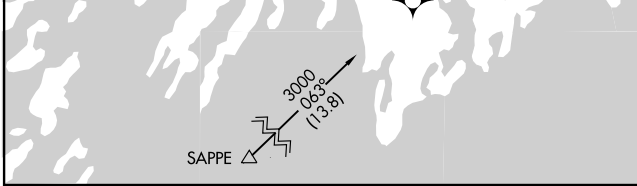
<p>ASOS</p> <p>135.725</p>	<p>BRUNSWICK APP CON *</p> <p>118.15 263.6</p>	<p>UNICOM</p> <p>122.8 (CTAF)</p>
-----------------------------------	---	--



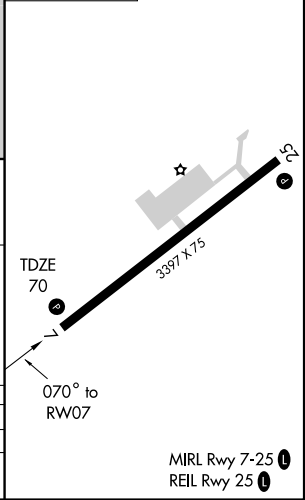
NE-1, 22 OCT 2009 to 19 NOV 2009

NE-1, 22 OCT 2009 to 19 NOV 2009

ELEV 70



	BAZQE	AVOIL	RW07	EDEJU
	2400	1700		
	070°			
	Procedure Turn NA			
	VGS1 and descent angle not coincident.			
	5 NM		5 NM	



CATEGORY	A	B	C	D
S-7	540 - 1	470 (500-1)		NA
CIRCLING	580 - 1	600 - 1		NA
	510 (600-1)	530 (600-1)		

WISCASSET, MAINE
Amdt 1A 06327

43°58'N - 69°43'W

WISCASSET (IWI)

GPS RWY 7

MIRL Rwy 7-25
REIL Rwy 25