

WISCASSET, MAINE

AL-6265 (FAA)

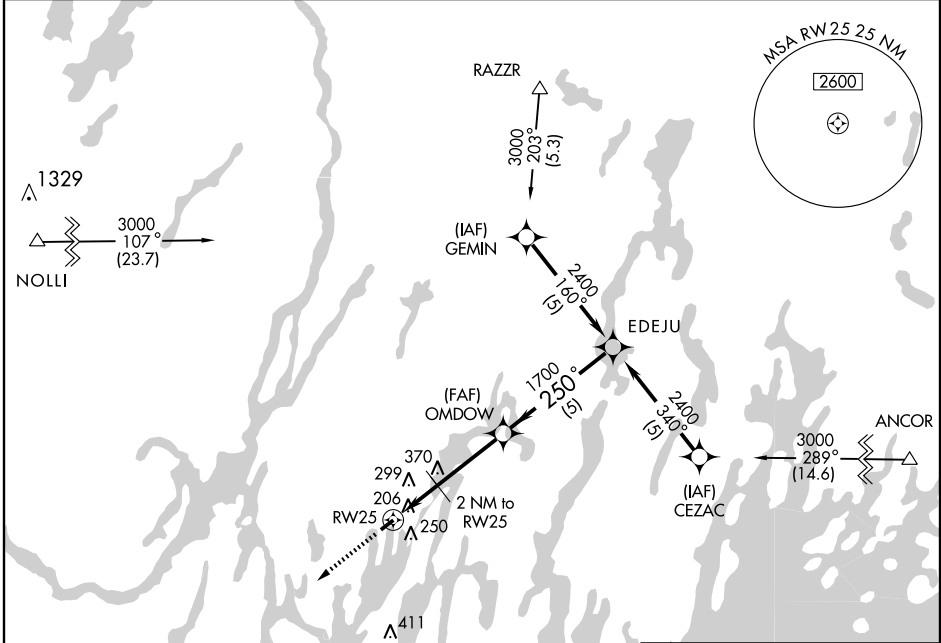
GPS RWY 25

WISCASSET (IWI)

APP CRS	Rwy Idg	3397
250°	TDZE	67
	Apt Elev	70

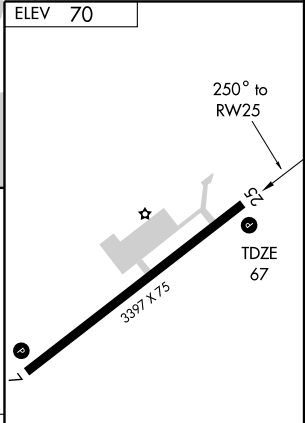
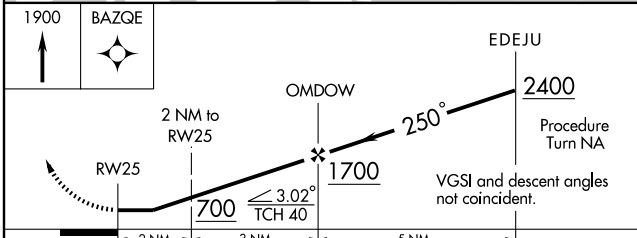
<p>CIRCLING NA Southeast RWY 7-25</p>	<p>MISSED APPROACH: Climb to 1900 direct BAZQE WP and hold.</p>
---------------------------------------	---

<p>ASOS</p> <p>135.725</p>	<p>BRUNSWICK APP CON *</p> <p>118.15 263.6</p>	<p>UNICOM</p> <p>122.8 (CTAF)</p>
-----------------------------------	---	--



NE-1, 22 OCT 2009 to 19 NOV 2009

NE-1, 22 OCT 2009 to 19 NOV 2009



CATEGORY	A	B	C	D
S-25	560 - 1	493 (500-1)		NA
CIRCLING	580 - 1	600 - 1		NA
	510 (600-1)	530 (600-1)		

MIRL Rwy 7-25

REIL Rwy 25

WISCASSET, MAINE
Amdt 1A 06327

43°58'N - 69°43'W

WISCASSET (IWI)

GPS RWY 25