

GPS RWY 26

WINNFIELD/ DAVID G. JOYCE (ØR5)

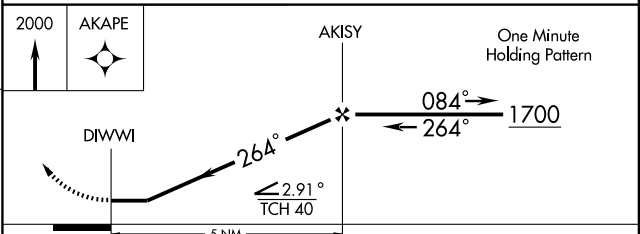
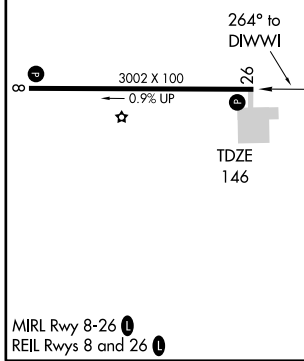
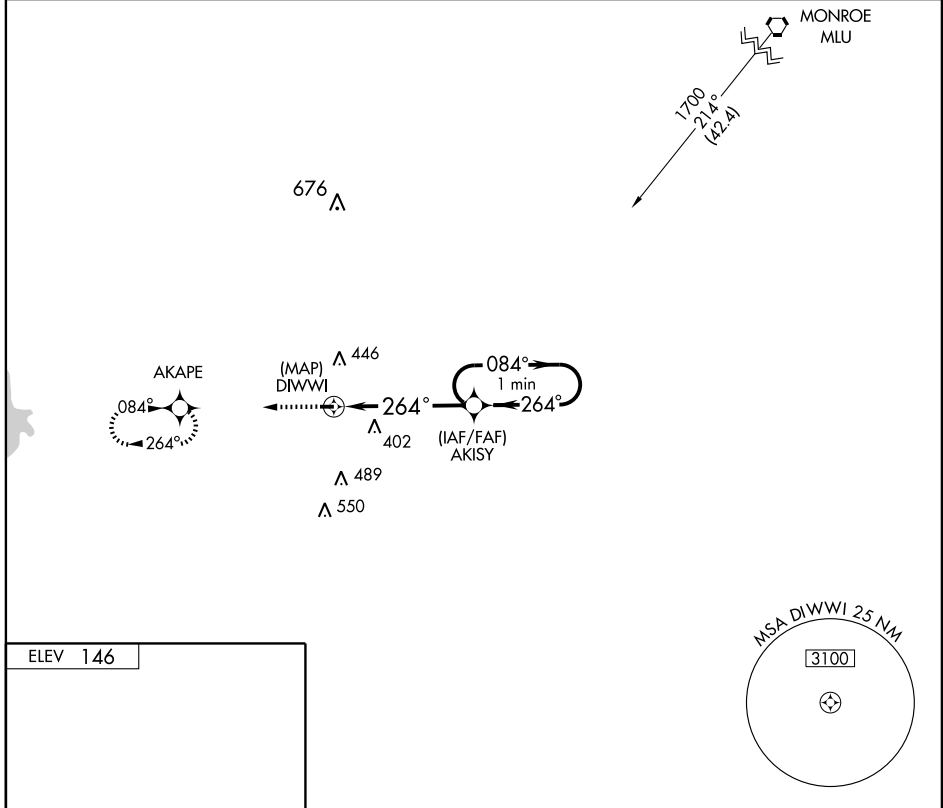
APP CRS 264°	Rwy Idg 3002
	TDZE 146
	Apt Elev 146

Use Alexandria Intl altimeter setting.
▲ NA

MISSED APPROACH: Climb to 2000 direct AKAPE WP and hold.

POLK APP CON
125.4 302.2

UNICOM
122.7 (CTAF) **122.8**



CATEGORY	A	B	C	D
S-26	660-1	514 (600-1)	660-1½ 514 (600-1½)	NA
CIRCLING	660-1	514 (600-1)	800-1¾ 654 (700-1¾)	NA

GPS RWY 26

SC-4, 22 OCT 2009 to 19 NOV 2009

SC-4, 22 OCT 2009 to 19 NOV 2009