

CHASE CITY, VIRGINIA

AL-6263 (FAA)

# RNAV (GPS) RWY 36

CHASE CITY MUNI (CXE)

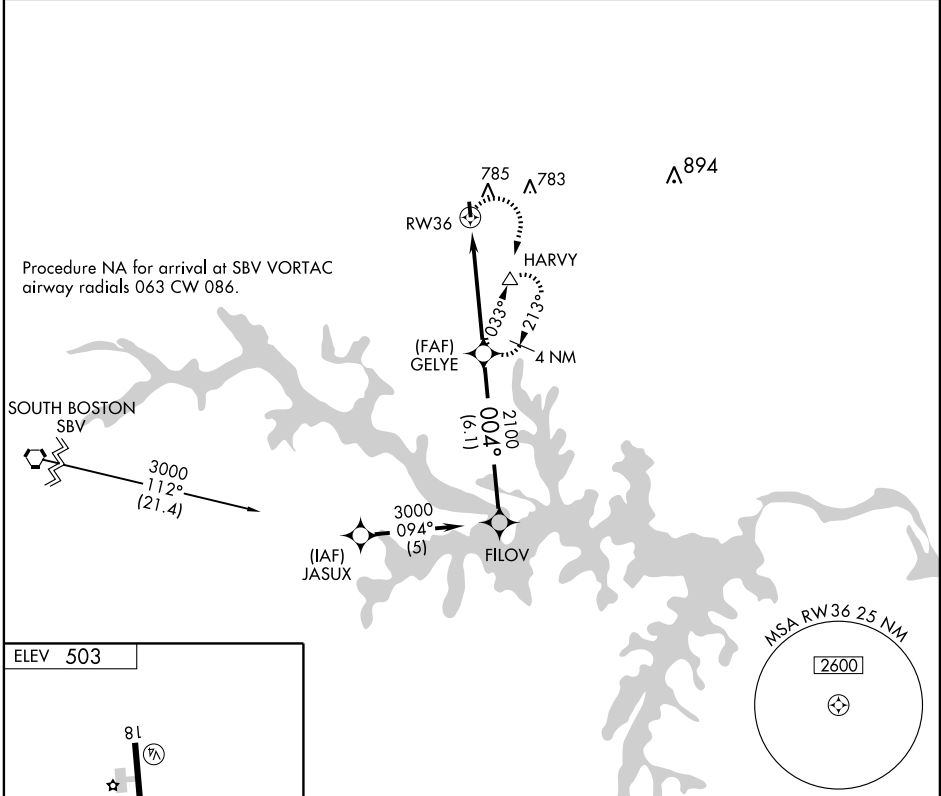
APP CRS	Rwy Idg	<b>3400</b>
<b>004°</b>	TDZE	<b>503</b>
	Apt Elev	<b>503</b>

**⚠** DME/DME RNP-0.3 NA. Circling to Rwy 18 NA at night.  
**⚠** NA Use Mecklenburg-Brunswick altimeter setting; if not received, use Danville altimeter setting and increase all MDA's 60 feet.

MISSED APPROACH: Climbing right turn to 3000 direct HARVY and hold.

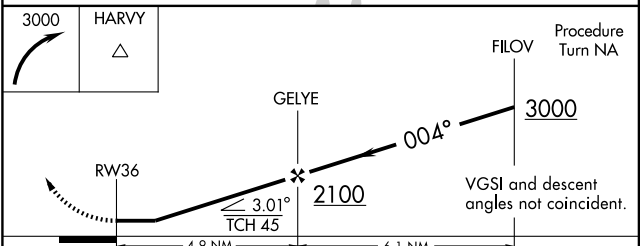
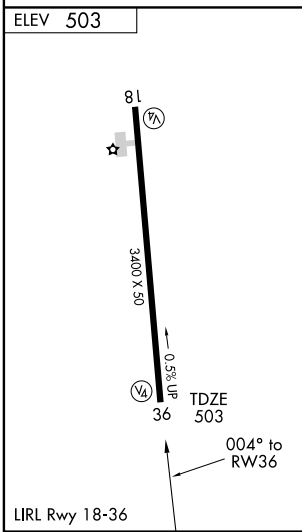
WASHINGTON CENTER  
**118.75 353.9**

UNICOM  
**122.9** (CTAF)



NE-3, 22 OCT 2009 to 19 NOV 2009

NE-3, 22 OCT 2009 to 19 NOV 2009



CATEGORY	A	B	C	D
RNAV MDA	1040-1	537 (600-1)	1040-1½ 537 (600-1½)	NA
CIRCLING	1200-1	697 (700-1)	1200-2 697 (700-2)	NA

CHASE CITY, VIRGINIA  
Orig-A 08185

36°47'N - 78°30'W

# CHASE CITY MUNI (CXE) RNAV (GPS) RWY 36