

VOR or GPS RWY 2

NEODESHA MUNI (2K7)

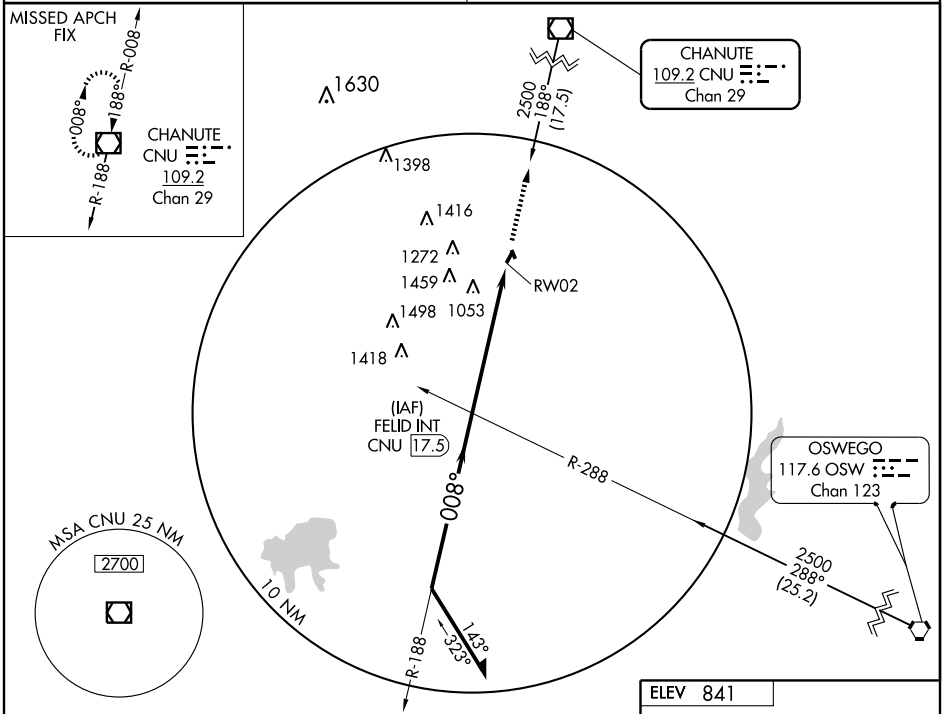
VOR/DME CNU 109.2 Chan 29	APP CRS 008°	Rwy Idg TDZE Apt Elev	2998 841 841
--	------------------------	-----------------------------	---

NA Use Chanute altimeter setting; when not received, use Joplin Rgnl altimeter setting.

MISSED APPROACH: Climb to 2600 via CNU R-188 to CNU VOR/DME and hold.

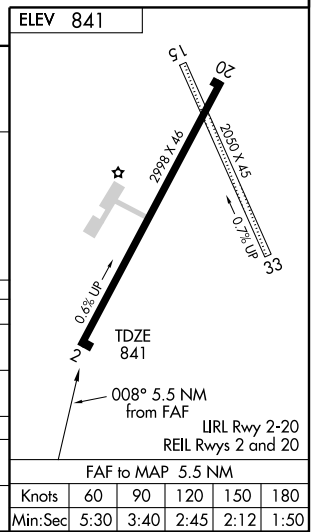
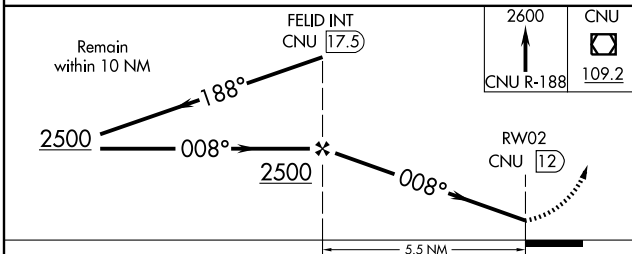
KANSAS CITY CENTER **132.9 279.5**

UNICOM **122.8 (CTAF)**



NC-2, 22 OCT 2009 to 19 NOV 2009

NC-2, 22 OCT 2009 to 19 NOV 2009



CATEGORY	A	B	C	D
S-2	1500-1	659 (700-1)	1500-1¼ 659 (700-1¾)	NA
CIRCLING	1500-1	659 (700-1)	1500-1¼ 659 (700-1¾)	NA
JOPLIN RGNL ALTIMETER SETTING MINIMUMS				
S-2	1600-1 759 (800-1)	1600-1¼ 759 (800-1¾)	1600-2¼ 759 (800-2¾)	NA
CIRCLING	1600-1 759 (800-1)	1600-1¼ 759 (800-1¾)	1600-2¼ 759 (800-2¾)	NA