

DELAWARE, OHIO

AL-6258 (FAA)

RNAV (GPS) RWY 28

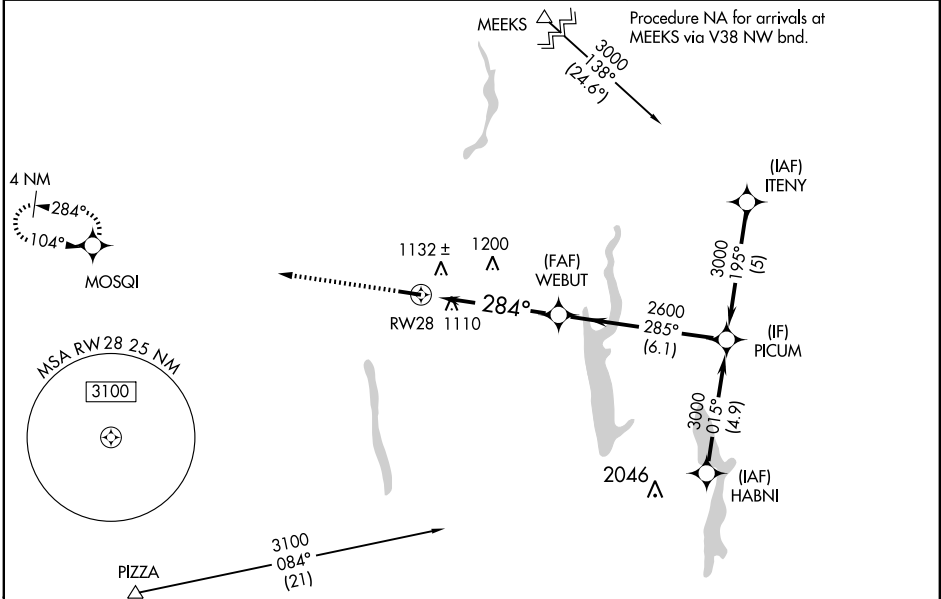
DELAWARE MUNI (DLZ)

WAAS CH 50506 W28A	APP CRS 284°	Rwy Idg 5000 TDZE 945 Apt Elev 945
---------------------------------	------------------------	---

▼ For uncompensated Baro-VNAV systems, LNAV/VNAV NA below -16°C (4°F) or above 47°C (116°F). DME/DME RNP-0.3 NA. When local altimeter setting not received, use Port Columbus Intl altimeter setting and increase all DAs 64 feet and visibility ¼ mile all Cats and all MDAs 80 feet and LNAV Cats C and D visibilities ¼ mile. Baro-VNAV and VDP NA when using Port Columbus Intl altimeter setting.

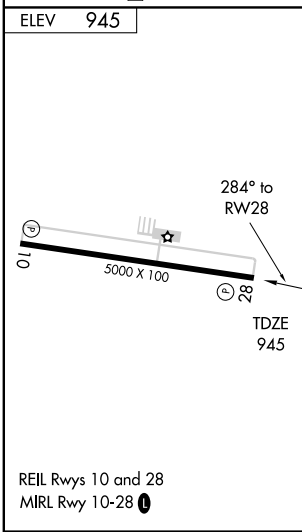
▲ MISSED APPROACH: Climb to 2600 direct MOSQI and hold.

AWOS-3 119.025	COLUMBUS APP CON 120.2 317.775	UNICOM 122.7 (CTAF) 0
--------------------------	--	---------------------------------



EC-2, 22 OCT 2009 to 19 NOV 2009

EC-2, 22 OCT 2009 to 19 NOV 2009



Procedure NA for arrivals at PIZZA via V12 W bnd.

ELEV 945	2600	MOSQI	PICUM
↑	↑	✧	✧
* LNAV only.			
RW28		WEBUT	PICUM
284° to RW28		284°	285°
* 1.4 NM to RW28		2600	3000
1.4 NM		3.6 NM	6.1 NM
Procedure Turn NA			
GS 3.00° TCH 42			
CATEGORY	A	B	C
LPV DA	1210-1 265 (300-1)		
LNAV/ DA VNAV	1459-1¼ 514 (600-1¾)		
LNAV MDA	1420-1 475 (500-1)	1420-1¼ 475 (500-1¼)	1420-1½ 475 (500-1½)
CIRCLING	1460-1 515 (600-1)	1460-1½ 515 (600-1½)	1500-2 555 (600-2)

DELAWARE, OHIO

Orig 08157

40°17'N - 83°07'W

RNAV (GPS) RWY 28

DELAWARE MUNI (DLZ)