

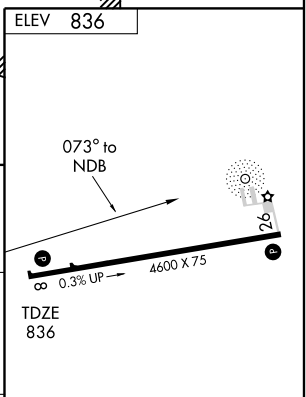
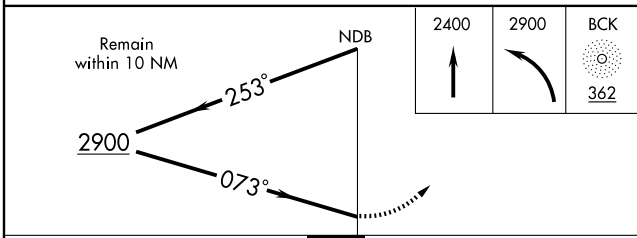
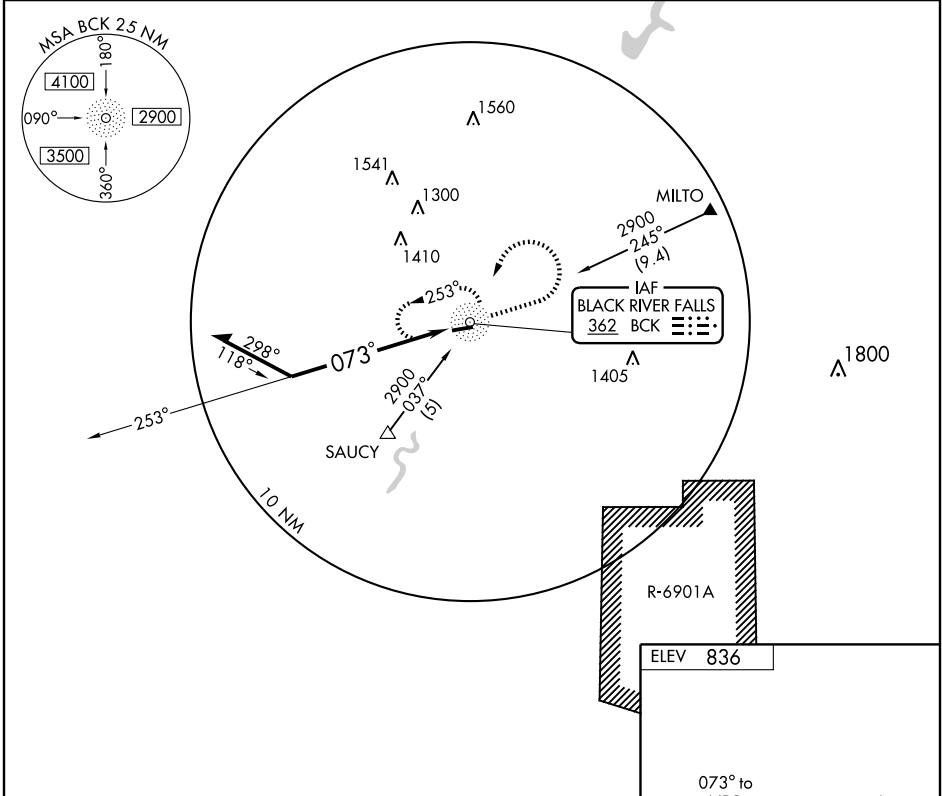
NDB RWY 8

BLACK RIVER FALLS AREA (BCK)

BCK NDB 362	APP CRS 073°	Rwy ldg TDZE Apt Elev	4600 836 836
-----------------------	------------------------	-----------------------------	---

<p>▼ Use La Crosse altimeter setting.</p> <p>▲ NA</p>	<p>MISSED APPROACH: Climb to 2400 then climbing left turn to 2900 direct BCK NDB and hold.</p>
---	--

<p>MINNEAPOLIS CENTER</p> <p>128.6 363.0</p>	<p>CTAF</p> <p>122.9</p>
---	---------------------------------



CATEGORY	A	B	C	D
S-8	1920-1/4 1084 (1100-1/4)	1920-1 1/2 1084 (1100-1 1/2)	1920-3	1084 (1100-3)
CIRCLING	1920-1/4 1084 (1100-1/4)	1920-1 1/2 1084 (1100-1 1/2)	1920-3	1084 (1100-3)

EC-3, 22 OCT 2009 to 19 NOV 2009

EC-3, 22 OCT 2009 to 19 NOV 2009