

RNAV (GPS) RWY 6

SMITHVILLE MUNI (ØA.3)

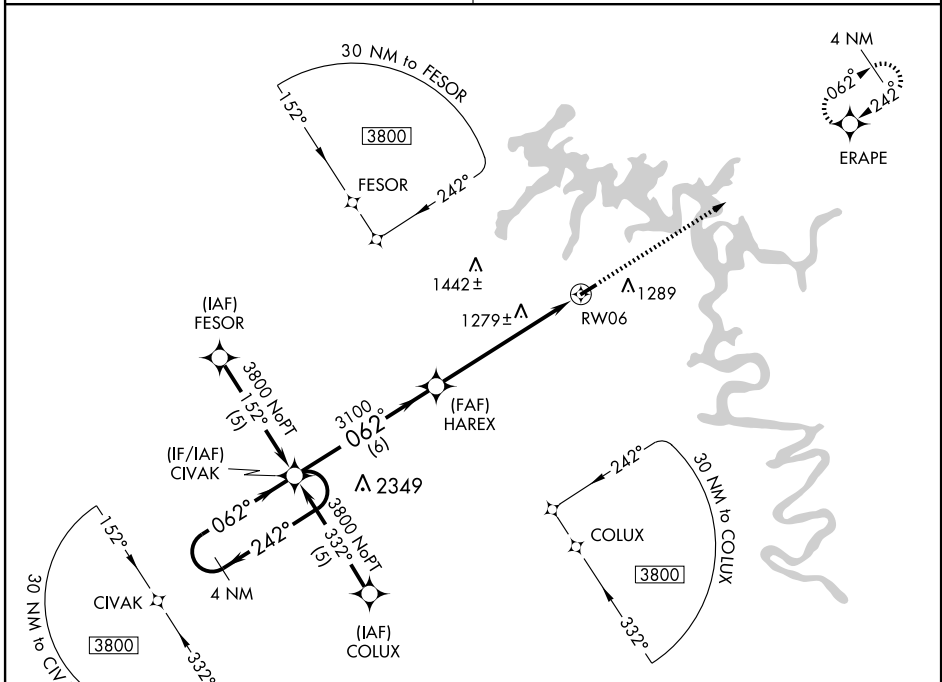
APP CRS 062°	Rwy Idg 3957
	TDZE 1080
	Apt Elev 1084

▼ DME/DME RNP-0.3 NA. Visibility reduction by helicopters NA.
▲ NA Use Sparta altimeter setting; when not received, use McMinnville altimeter setting and increase all MDAs 20 feet and LNAV and Circling Cat. C visibility ¼ mile.

MISSED APPROACH: Climb to 3800 direct ERAPE and hold.

MEMPHIS CENTER
132.1 263.1

UNICOM
122.8 (CTAF)

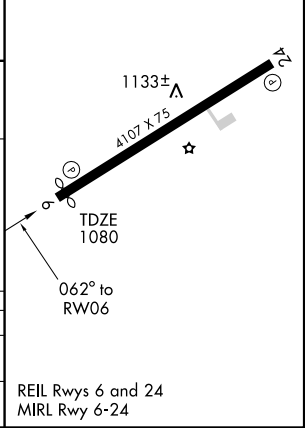
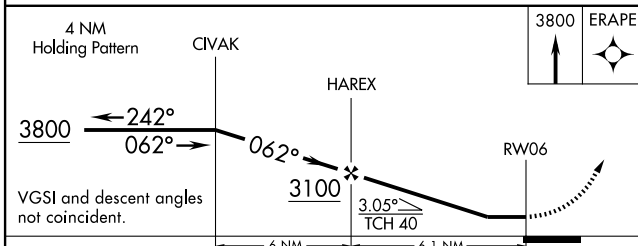


SE-1, 22 OCT 2009 to 19 NOV 2009

SE-1, 22 OCT 2009 to 19 NOV 2009



ELEV 1084 Rwy 6 Idg 3957'



CATEGORY	A	B	C	D
LNAV MDA	1580-1	500 (500-1)	1580-1½ 500 (500-1½)	NA
CIRCLING	1680-1	596 (600-1)	1680-1½ 596 (600-1½)	NA

REIL Rwy 6 and 24
MIRL Rwy 6-24