

MIDDLEFIELD, OHIO

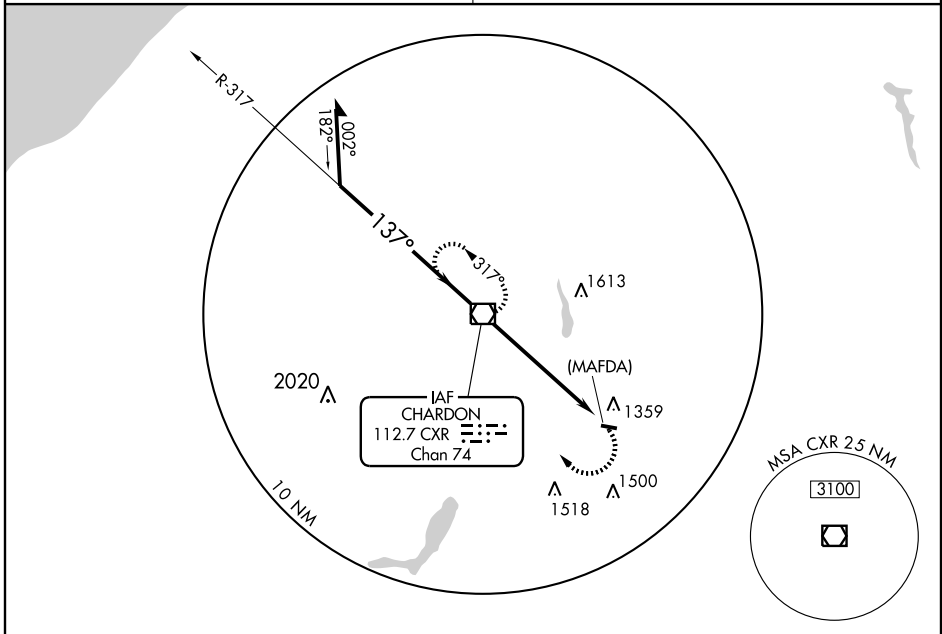
AL-6254 (FAA)

VOR/DME CXR <b>112.7</b> Chan <b>74</b>	APP CRS <b>137°</b>	Rwy Idg TDZE Apt Elev <b>1175</b>	<b>N/A</b> <b>N/A</b> <b>1175</b>
---	------------------------	---	---

# VOR or GPS-A

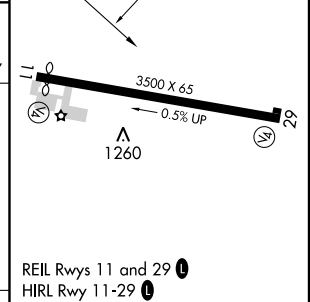
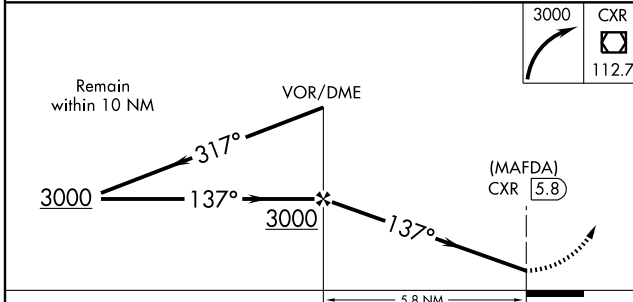
MIDDLEFIELD/GEAUGA COUNTY (7G8)

<p>▼ Use Youngstown-Warren Rgnl alimeter setting. ▲ NA</p>	<p>MISSED APPROACH: Climbing right turn to 3000 direct CXR VOR/DME and hold.</p>
<p>CLEVELAND APP CON <b>125.35 354.025</b></p>	<p>UNICOM <b>123.0 (CTAF) 0</b></p>



EC-2, 22 OCT 2009 to 19 NOV 2009

EC-2, 22 OCT 2009 to 19 NOV 2009



CATEGORY	A	B	C	D	FAF to MAP 5.8 NM					
CIRCLING	1800-1	627 (700-1)	1800-1¼ 627 (700-1¼)	NA	Knots	60	90	120	150	180
					Min:Sec	5:48	3:52	2:54	2:19	1:56

MIDDLEFIELD, OHIO  
Amdt 5A 07242

41°27'N - 81°04'W

# VOR or GPS-A