

AMRST TWO DEPARTURE

EC-2, 22 OCT 2009 to 19 NOV 2009

DEPARTURE ROUTE DESCRIPTION

TAKE-OFF RUNWAYS 11, 29: Climb via assigned heading to 3000 thence. . . .

. . . or assigned altitude for vectors to intercept the DJB VOR/DME R-265 to AMRST INT then via (Transition).
Expect filed altitude/flight level ten (10) minutes after departure.

CARLETON TRANSITION (AMRST2_CRL): From over AMRST INT via CRL R-159 to CRL VORTAC.
WATERVILLE TRANSITION (AMRST2_VWV): From over AMRST INT via VWV R-115 to VWV VOR/DME.

CLEVELAND DEP CON
125.35 346.325

TAKE-OFF MINIMUMS:

Rwys 11, 29: STANDARD.

NOTE: RADAR REQUIRED

CARLETON 115.7 CRL Chen 104
L-28, H-10 N42°02.88'-W83°27.46'

TAKE-OFF OBSTACLES:

- Rwy 11: Railroad 331' from DER, 315' left of centerline, 23' AGL/1182' MSL.
Trees 3144' from DER, 671' left of centerline, 100' AGL/1249' MSL.
- Rwy 29: Railroad 349' from DER, 521' left of centerline, 23' AGL/1212' MSL.
Multiple Buildings 993' from DER, 294' right of centerline, 40' AGL/1239' MSL.
Trees 1875' from DER, 791' right of centerline, 100' AGL/1319' MSL.
Tank 2251' from DER, 578' right of centerline, 125' AGL/1315' MSL.

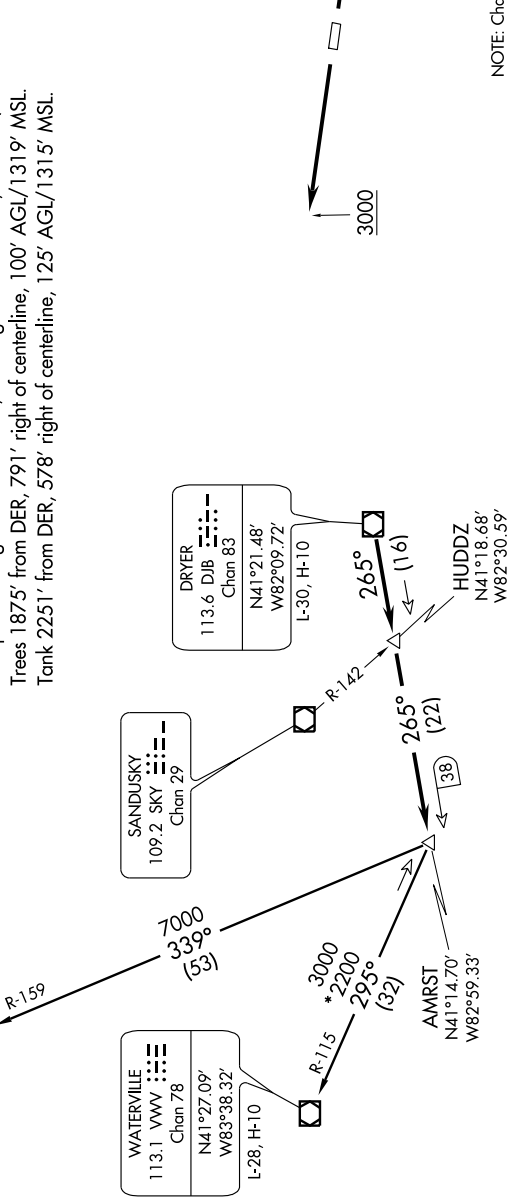
WATERVILLE 113.1 VWV Chen 78
L-28, H-10 N41°27.09' W83°38.32'

SANDUSKY 109.2 SKY Chen 29
L-30, H-10 N41°21.48' W82°09.72'

DRYER 113.6 DJB Chen 83
L-30, H-10 N41°21.48' W82°09.72'

AMRST N41°14.70' W82°59.33'

HUDDZ N41°18.68' W82°30.59'



NOTE: Chart not to scale.

AMRST TWO DEPARTURE

EC-2, 22 OCT 2009 to 19 NOV 2009