

SHERIDAN, INDIANA

AL-6252 (FAA)

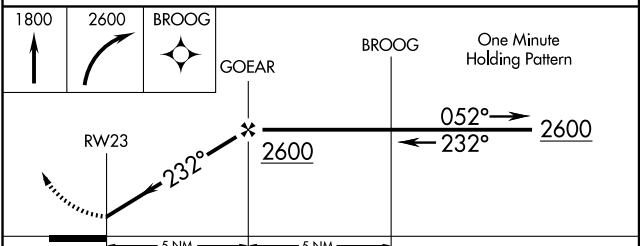
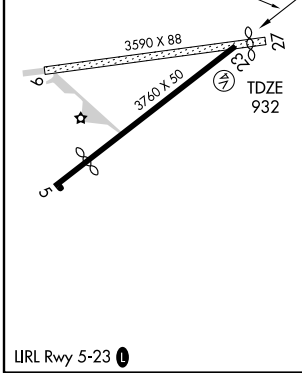
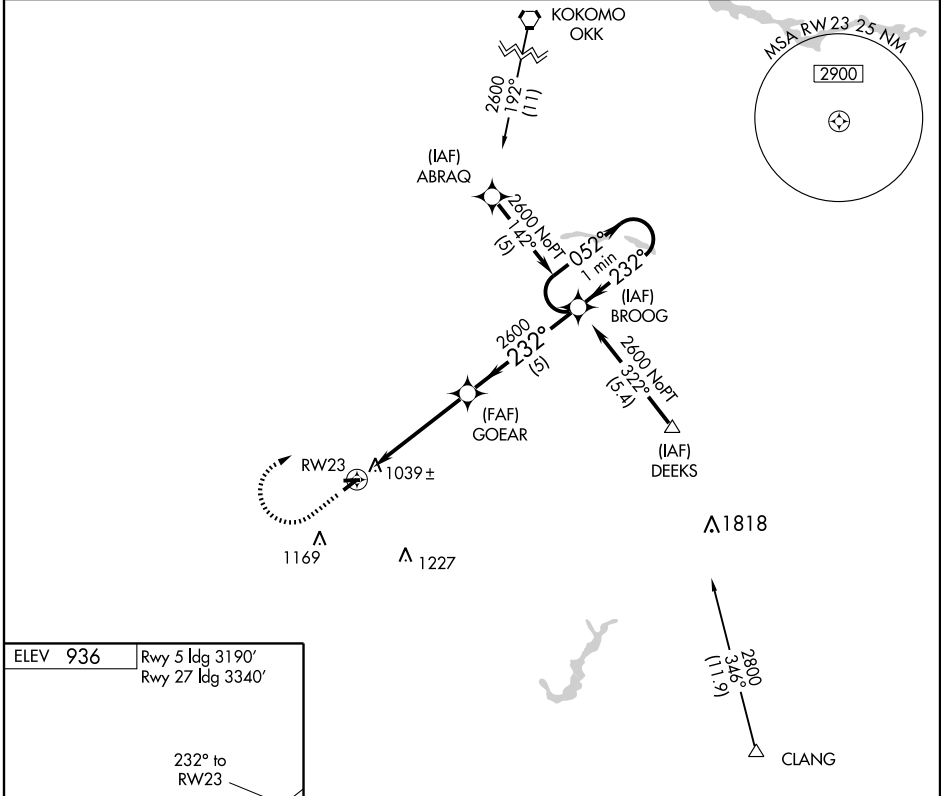
GPS RWY 23

SHERIDAN (5I4)

APP CRS 232°	Rwy ldg 3760
	TDZE 932
	Apt Elev 936

<p>▲ NA Use Indianapolis Intl altimeter setting. Procedure not authorized at night except by prior arrangement for runway lights.</p>	<p>MISSED APPROACH: Climb to 1800 then climbing right turn to 2600 direct BROOG WP and hold.</p>
--	---

<p>INDIANAPOLIS APP CON 124.65 317.8</p>	<p>UNICOM 123.075 (CTAF) 1</p>
---	---



CATEGORY	A	B	C	D
S-23	1380-1	448 (500-1)	1380-1¼ 448 (500-1¼)	NA
CIRCLING	1460-1 524 (600-1)	1480-1 544 (600-1)	1480-1½ 544 (600-1½)	NA

SHERIDAN, INDIANA
Orig 09295

40°11'N-86°13'W

SHERIDAN (5I4) GPS RWY 23

EC-2, 22 OCT 2009 to 19 NOV 2009

EC-2, 22 OCT 2009 to 19 NOV 2009