

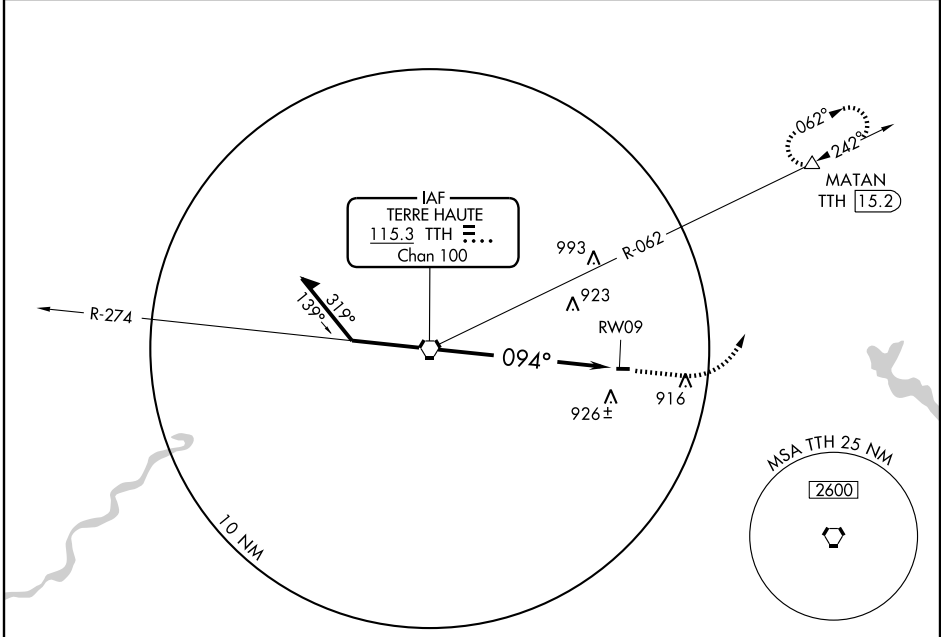
VOR or GPS RWY 9
BRAZIL CLAY COUNTY (ØI2)

VORTAC TTH 115.3 Chan 100	APP CRS 094°	Rwy Idg TDZE Apt Elev	2321 645 645
---	------------------------	-----------------------------	---

▼ Use Terre Haute altimeter setting.
▲ NA Procedure not authorized at night.
DME Required.

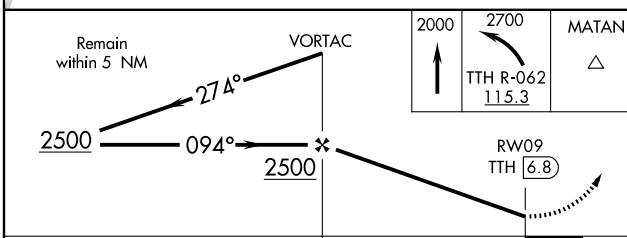
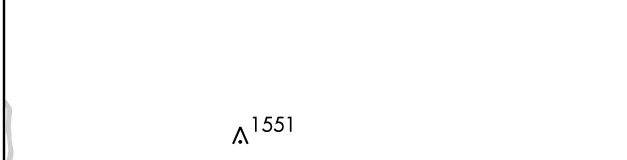
MISSED APPROACH: Climb to 2000, then climbing left turn to 2700 via TTH R-062 to MATAN/15.2 DME and hold.

HULMAN APP CON ★ 125.45 339.8	UNICOM 122.8 (CTAF)
---	-------------------------------



EC-2, 22 OCT 2009 to 19 NOV 2009

EC-2, 22 OCT 2009 to 19 NOV 2009



ELEV 645	Rwy 9 Idg 2321'
	Rwy 27 Idg 2499'
094° 6.8 NM from FAF	
TDZE 645	
2941 X 40	
0.5% UP	
LIRL Rwy 9-27	
FAF to MAP 6.8 NM	
Knots	60 90 120 150 180
Min:Sec	6:48 4:32 3:24 2:43 2:16

CATEGORY	A	B	C	D
S-9	1300-1 655 (700-1)		NA	
CIRCLING	1360-1 715 (800-1)		NA	