

RNAV (GPS) RWY 27

BRAZIL CLAY COUNTY (ØI2)

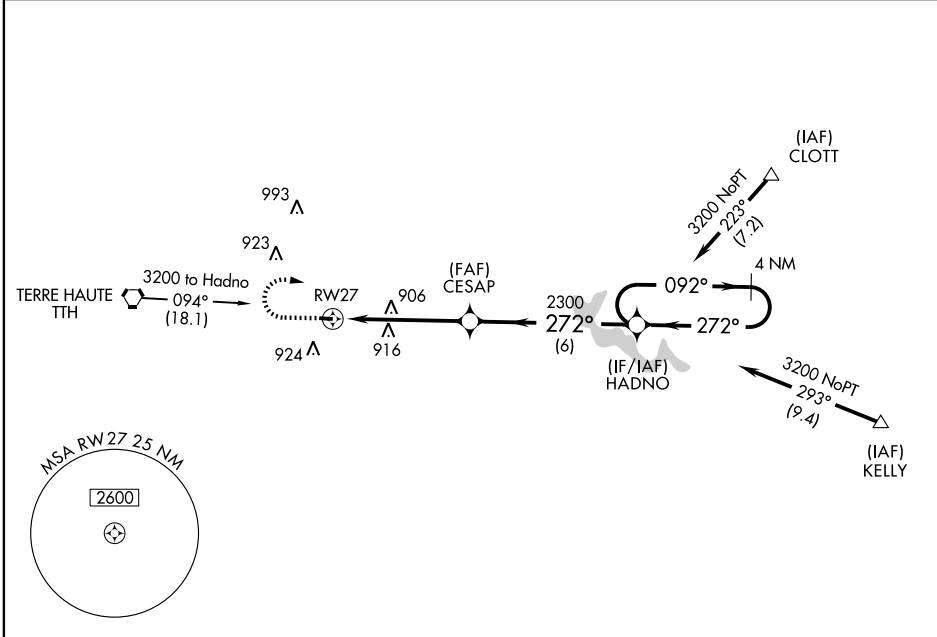
APP CRS 272°	Rwy Idg TDZE Apt Elev	2499 645 645
------------------------	-----------------------------	---

▽ GPS or RNP-0.3 required. DME/DME RNP-0.3 NA.
 ▲ NA Use Terre Haute altimeter setting.

MISSED APPROACH: Climb to 2300 then climbing right turn to 3200 direct HADNO WP and hold.

HULMAN APP CON *
125.45 339.8

UNICOM
122.8 (CTAF)



EC-2, 22 OCT 2009 to 19 NOV 2009

EC-2, 22 OCT 2009 to 19 NOV 2009

ELEV 645 Rwy 9 Idg 2321' Rwy 27 Idg 2499'

TDZE 645

2941 X 40

272° to RWY 27

0.5% UP

LURL Rwy 9-27

1349 ▲

2300	3200	HADNO	HADNO 4 NM Holding Pattern	
RWY 27		CESAP	HADNO 4 NM Holding Pattern	
≤ 3.07° TCH 40		2300	HADNO 4 NM Holding Pattern	
5 NM		6 NM	HADNO 4 NM Holding Pattern	
CATEGORY	A	B	C	D
LNAV MDA	1240-1 595 (600-1)	NA		
CIRCLING	1240-1 595 (600-1)	NA		

VGSI and descent angles not coincident.