

GEORGETOWN, OHIO

AL-6250 (FAA)

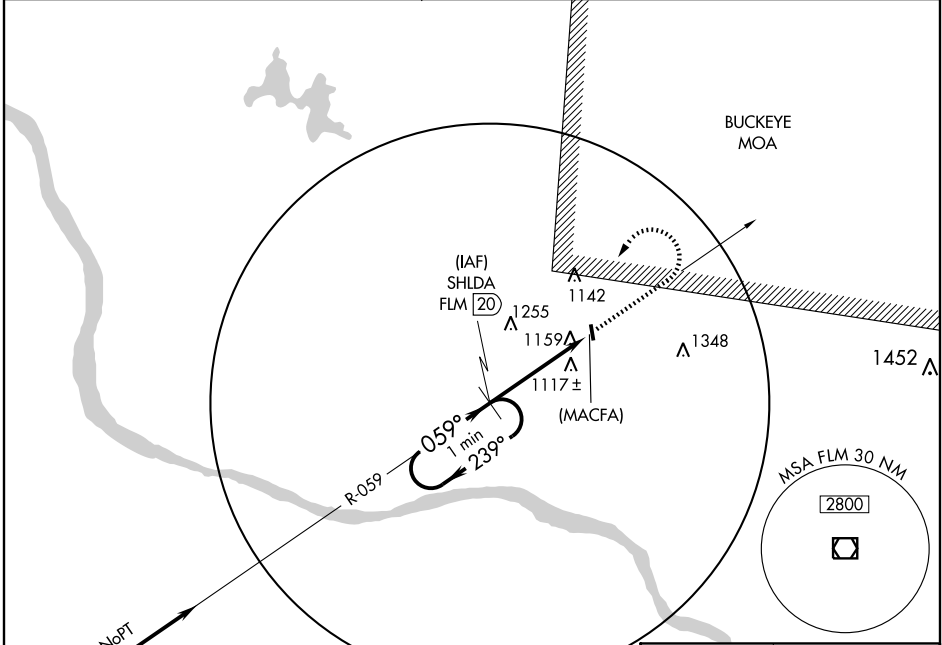
VOR/DME FLM <b>117.0</b> Chan <b>117</b>	APP CRS <b>059°</b>	Rwy Idg TDZE Apt Elev <b>N/A</b> <b>N/A</b> <b>957</b>
--	------------------------	---

# VOR/DME or GPS-A

GEORGETOWN/BROWN COUNTY (GEO)

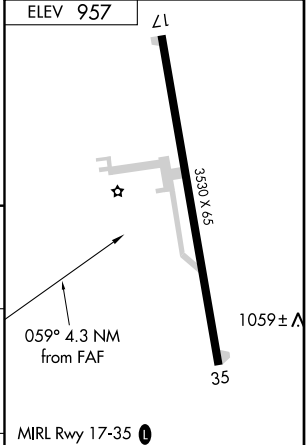
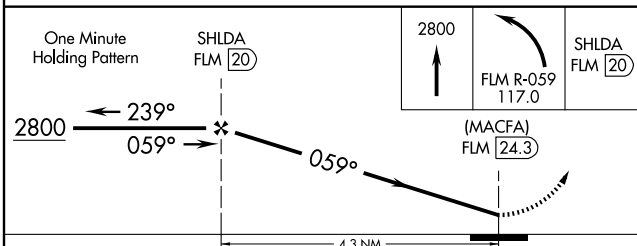
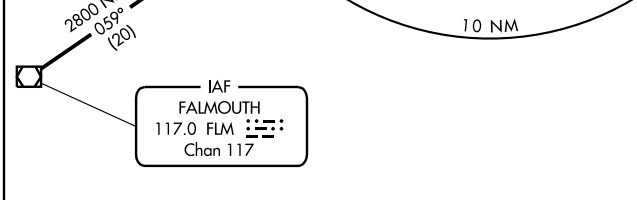
<p>▼ Use Cincinnati/Northern Kentucky Intl, KY altimeter setting.</p> <p>▲ NA</p>	<p>MISSED APPROACH: Climb to 2800; then left turn via FLM R-059 to SHLDA 20 DME and hold.</p>
---	---

<p>INDIANAPOLIS CENTER <b>135.575 290.5</b></p>	<p>CTAF <b>122.9</b></p>
---	--------------------------



EC-2, 22 OCT 2009 to 19 NOV 2009

EC-2, 22 OCT 2009 to 19 NOV 2009



CATEGORY	A	B	C	D	Knots	60	90	120	150	180
CIRCLING	1700-1 743 (800-1)	1700-1¼ 743 (800-1¼)	1700-2¼ 743 (800-2¼)	NA	Min:Sec					

GEORGETOWN, OHIO  
Orig 06187

38°53'N - 83°53'W

# VOR/DME or GPS-A