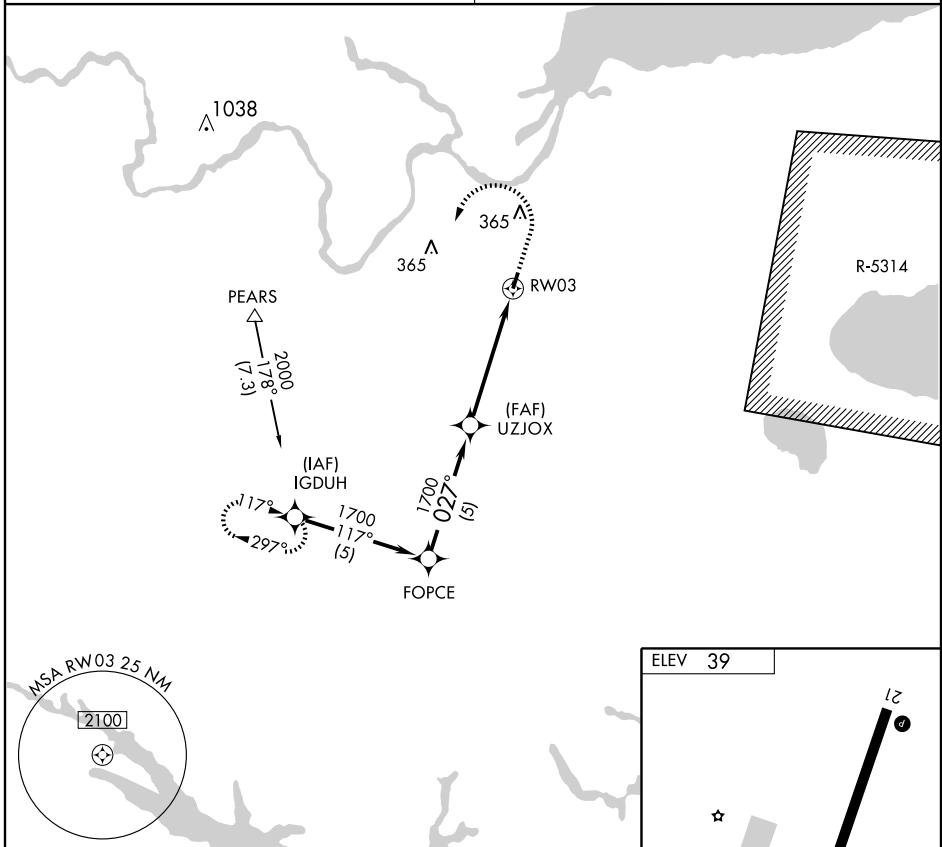


GPS RWY 3

PLYMOUTH MUNI (PMZ)

APP CRS	Rwy Idg	5500
027°	TDZE	39
	Apt Elev	39

<p>▼ Use New Bern altimeter setting.</p> <p>▲ NA</p>	<p>MISSED APPROACH: Climb to 1000 then climbing left turn to 2000 direct IGDUH WP and hold.</p>
<p>WASHINGTON CENTER</p> <p>135.5 272.75</p>	<p>UNICOM</p> <p>122.8 (CTAF) 0</p>



SE-2, 22 OCT 2009 to 19 NOV 2009

SE-2, 22 OCT 2009 to 19 NOV 2009

	FOPCE	UZJOX	1000	2000	IGDUH
	1700	1700	↑	↻	✧
Procedure Turn	027°		RWY03		
NA	5 NM		5.1 NM		
CATEGORY	A	B	C	D	
S-3	520-1	481 (500-1)	520-1¼ 481 (500-1¼)	NA	
CIRCLING	600-1	561 (600-1)	600-1½ 561 (600-1½)	NA	

