

HANNIBAL, MISSOURI

AL-6245 (FAA)

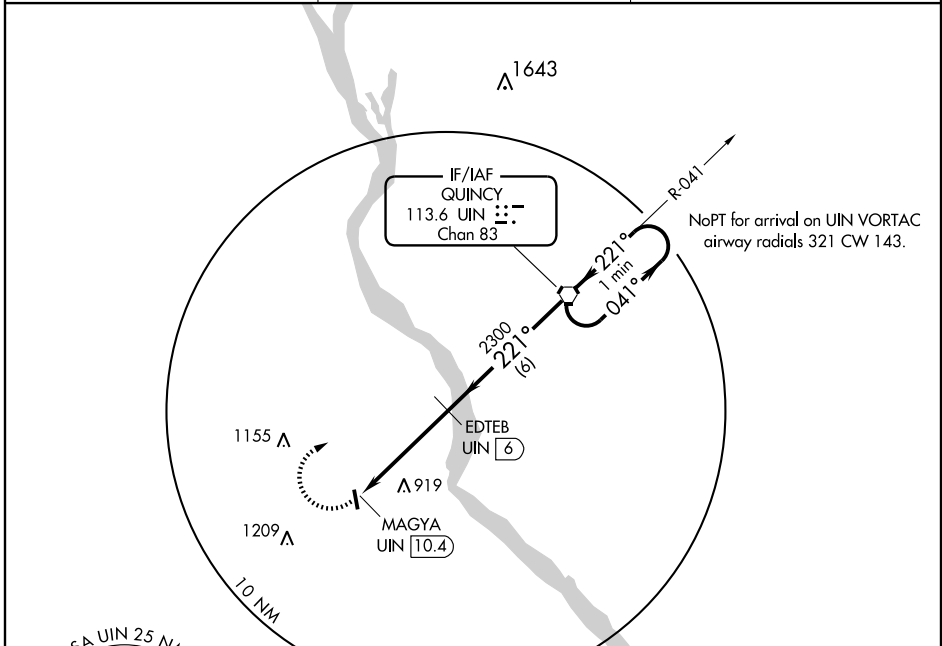
VORTAC UIN 113.6 Chan 83	APP CRS 221°	Rwy Idg TDZE Apt Elev	N/A N/A 769
--	------------------------	-----------------------------	--

VOR/DME-A
HANNIBAL RGNL (H.A.E)

NA When local altimeter setting not received, use Quincy altimeter setting, increase all MDA 60 feet.

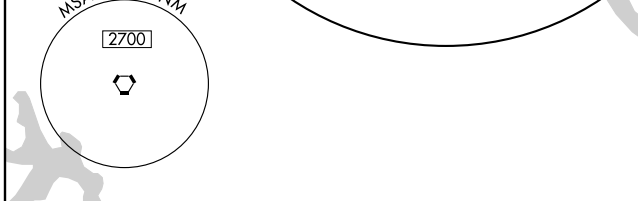
MISSED APPROACH: Climbing right turn to 2300 direct UIN VORTAC and hold.

AWOS-3 120.775	KANSAS CITY CENTER 135.525 319.9	UNICOM 122.8 (CTAF) 0
--------------------------	--	--

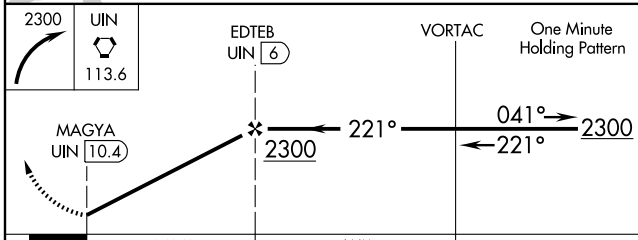
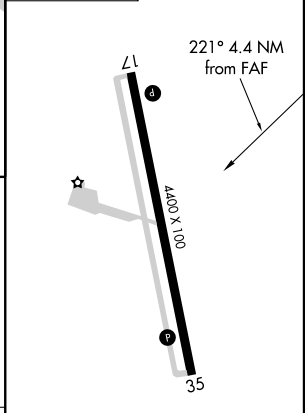


NC-3, 22 OCT 2009 to 19 NOV 2009

NC-3, 22 OCT 2009 to 19 NOV 2009



ELEV 769



CATEGORY	A	B	C	D
CIRCLING	1300-1	531 (600-1)	1300-1½ 531 (600-1½)	NA

MIRL Rwy 17-35 **0**
REIL Rwys 17 and 35 **0**

HANNIBAL, MISSOURI
Amdt 4 09127

39°43' N - 91°27' W

HANNIBAL RGNL (H.A.E)
VOR/DME-A