

RNAV (GPS) RWY 35

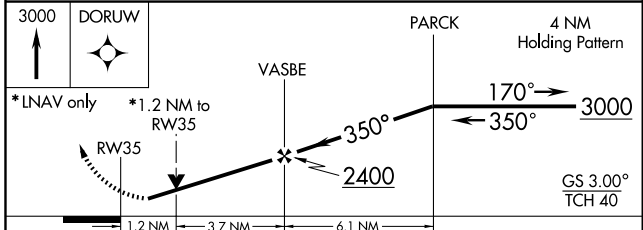
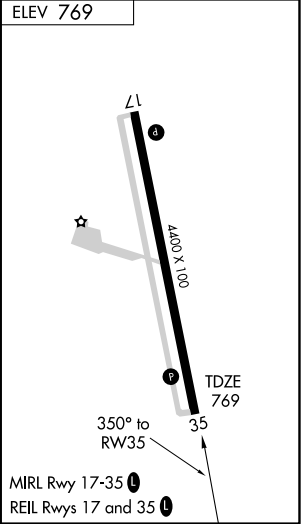
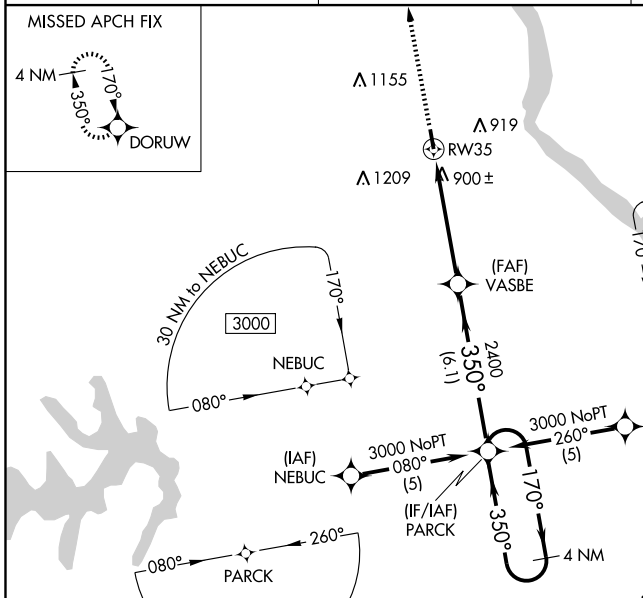
HANNIBAL RGNL (HAE)

WAAS CH 72612 W35A	APP CRS 350°	Rwy Idg 4400 TDZE 769 Apt Elev 769
---------------------------------	------------------------	---

⚠ For uncompensated Baro-VNAV systems, LNAV/VNAV NA below -16°C (4°F) or above 54°C (130°F).
⚠ NA DME/DME RNP-0.3 NA. Visibility reduction by helicopters NA.
 When local altimeter setting not received, use Quincy altimeter setting and increase all DA 41 feet, all MDA 60 feet.
 Baro-VNAV and VDP NA when using Quincy, IL altimeter setting.

MISSED APPROACH: Climb to 3000 direct DORUW and hold.

AWOS-3 120.775	KANSAS CITY CENTER 135.525 319.9	UNICOM 122.8 (CTAF)
--------------------------	--	-------------------------------



CATEGORY	A	B	C	D
LPV DA	1019-1 250 (300-1)			NA
LNAV/VNAV DA	1242-1 3/4 473 (500-1 3/4)			NA
LNAV MDA	1200-1 431 (500-1)		1200-1 1/4 431 (500-1 1/4)	NA
CIRCLING	1260-1 491 (500-1)		1260-1 1/2 491 (500-1 1/2)	NA

NC-3, 22 OCT 2009 to 19 NOV 2009

NC-3, 22 OCT 2009 to 19 NOV 2009